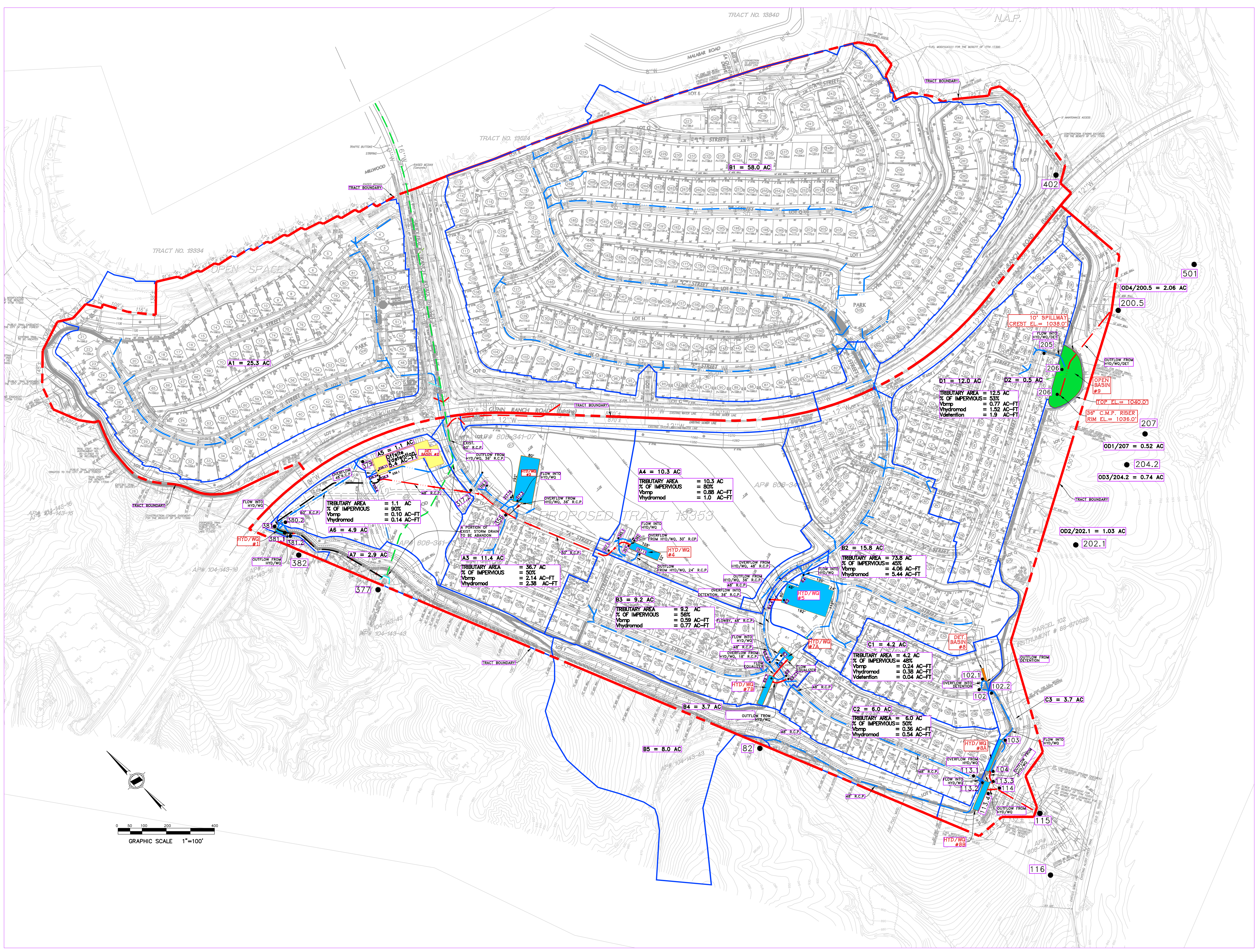


SECTION 3

DETENTION/ HYDROMODIFICATION/ WATER QUALITY VOLUME EXHIBIT





LEGEND

- Portola Hills Detention Chamber
- Hydromod/Water Quality Underground Chamber
- Hydromod/WQ/Detention Basin
- Portola Center Detention Chamber
- Existing Storm Drain
- Proposed Storm Drain (Pre-treated flows)
- Proposed Storm Drain (Post-treatment\offsite flows)
- Tributary Area Boundary
- Tract Boundary
- Node Number 204.2

PREPARED BY: **H&A**
 HUNSAKER & ASSOCIATES
 IRVINE, CA
 PREPARED FOR: **USA PORTOLA LLC**
 280 NEWPORT CENTER DRIVE
 SUITE 240
 NEWPORT BEACH, CA 92660

PORTOLA CENTER TENTATIVE TRACTS 15353 & 17300

PRELIMINARY DESIGN DETENTION - HYDROMODIFICATION & WATER QUALITY VOLUME EXHIBIT BIOCLEAN OPTION (WQ)

