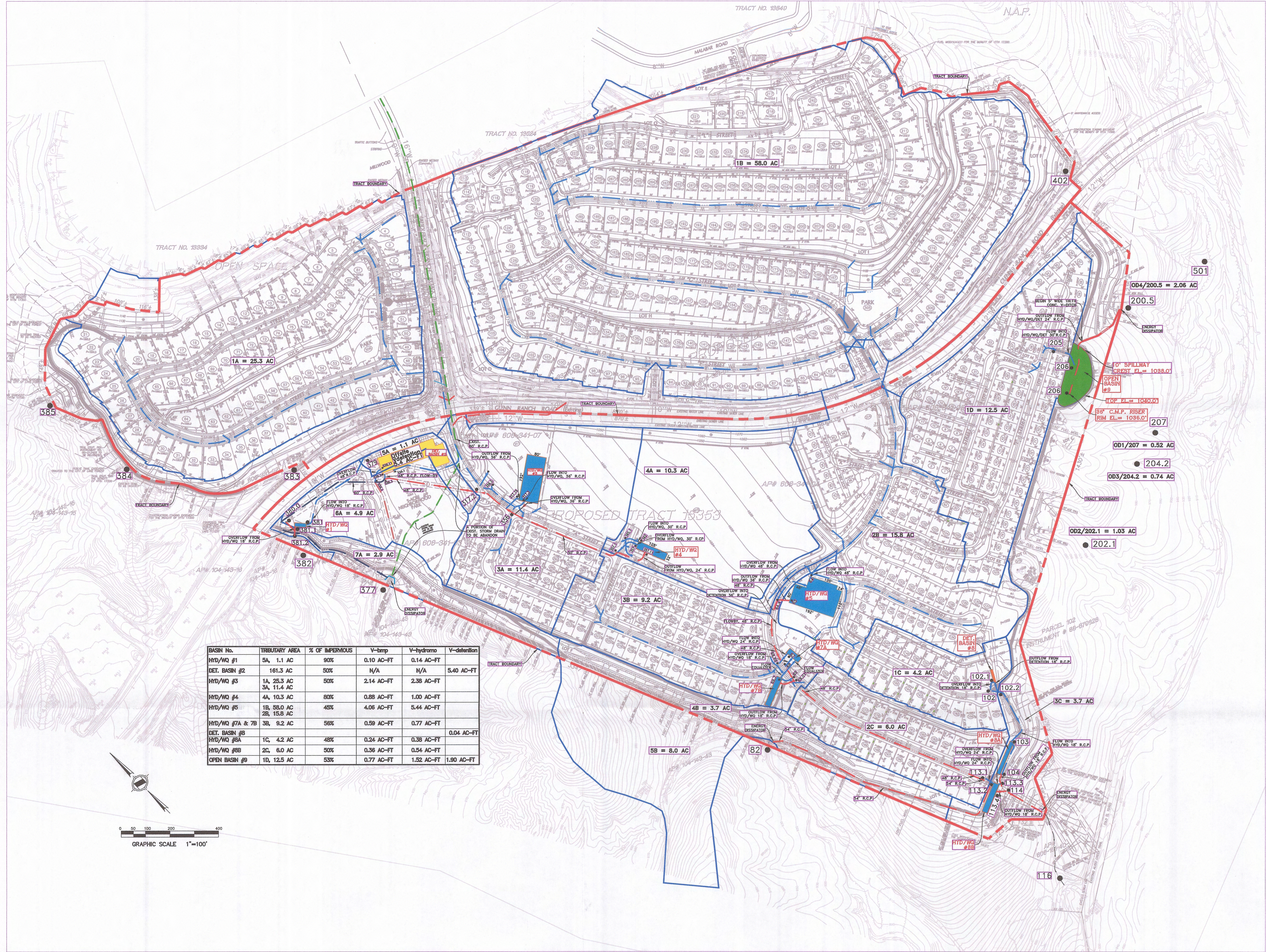


Appendix D

Appendix D

Water Quality Treatment BMP Design Calculations and Fact Sheets

(Covers both TTM 15353 and 17300)



| BASIN No. | TRIBUTARY AREA | % OF IMPERVIOUS | V-bmp | V-hydromo | V-detention |
|-----------------|----------------------------|-----------------|------------|------------|-------------|
| HYD/WQ #1 | 5A, 1.1 AC | 90% | 0.10 AC-FT | 0.14 AC-FT | |
| DET. BASIN #2 | 161.3 AC | 50% | N/A | N/A | 5.40 AC-FT |
| HYD/WQ #3 | 1A, 25.3 AC 3A, 11.4 AC | 50% | 2.14 AC-FT | 2.38 AC-FT | |
| HYD/WQ #4 | 4A, 10.3 AC | 80% | 0.88 AC-FT | 1.00 AC-FT | |
| HYD/WQ #5 | 1B, 58.0 AC 2B, 15.8 AC | 45% | 4.06 AC-FT | 5.44 AC-FT | |
| HYD/WQ #7A & 7B | 3B, 9.2 AC | 56% | 0.59 AC-FT | 0.77 AC-FT | |
| DET. BASIN #8 | | | | | 0.04 AC-FT |
| HYD/WQ #9A | 1C, 4.2 AC | 48% | 0.24 AC-FT | 0.38 AC-FT | |
| HYD/WQ #9B | 2C, 6.0 AC | 50% | 0.36 AC-FT | 0.54 AC-FT | |
| OPEN BASIN #9 | 1D, 12.5 AC | 53% | 0.77 AC-FT | 1.52 AC-FT | 1.90 AC-FT |

LEGEND

- Portola Hills Detention Chamber
- Hydromod/Water Quality Underground Chamber
- Hydromod/WQ/Detention Basin
- Portola Center Detention Chamber
- Existing Storm Drain
- Proposed Storm Drain (Pre-treated flows)
- Proposed Storm Drain (Post-treatment)
- Proposed Storm Drain (Post-treatment\offsite flows)
- Tributary Area Boundary
- Tract Boundary
- Node Number 204.2

PREPARED BY: **H&A**
 HUNSAKER & ASSOCIATES
 IRVINE, CA

PREPARED FOR:
USA PORTOLA LLC
 280 NEWPORT CENTER DRIVE
 SUITE 240
 NEWPORT BEACH, CA 92660

PORTOLA CENTER TENTATIVE TRACTS 15353 & 17300

**PRELIMINARY DESIGN
 DETENTION - HYDROMODIFICATION
 & WATER QUALITY VOLUME EXHIBIT
 BIOCLEAN OPTION (WQ)**

F:\0354\Engineering\SV_Hydrology\STORMFILTER_RET-HYDROMOD-WQ VOLUME EXHIBIT_WQMP_04-13_13_with soil boundary.dwg

