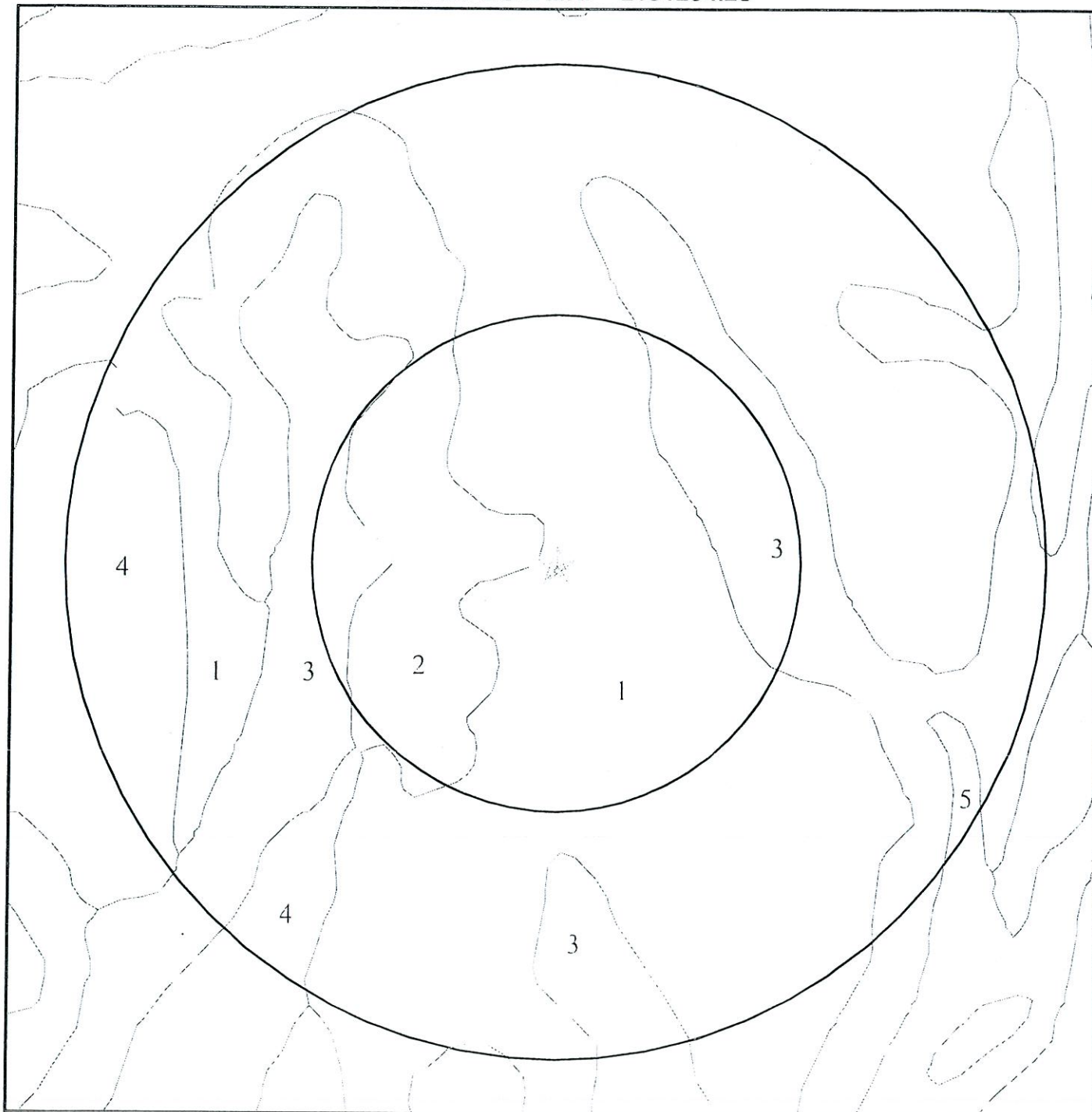
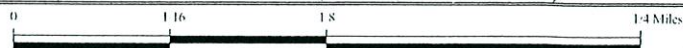


SSURGO SOIL MAP - 2181254.2s



Target Property  
SSURGO Soil  
Water



SITE NAME: Former IRWD Site  
ADDRESS: Commercentre Drive/Biscayne Parkway Drive  
Lake Forest CA 92630  
LAT/LONG: 33.6601 / 117.6827

CLIENT: Leighton and Associates, Inc.  
CONTACT: Meredith Church  
INQUIRY #: 2181254.2s  
DATE: March 28, 2008 5:31 pm

## GEOCHECK® - PHYSICAL SETTING SOURCE SUMMARY

### DOMINANT SOIL COMPOSITION IN GENERAL AREA OF TARGET PROPERTY

The U.S. Department of Agriculture's (USDA) Soil Conservation Service (SCS) leads the National Cooperative Soil Survey (NCSS) and is responsible for collecting, storing, maintaining and distributing soil survey information for privately owned lands in the United States. A soil map in a soil survey is a representation of soil patterns in a landscape. The following information is based on Soil Conservation Service SSURGO data.

#### Soil Map ID: 1

Soil Component Name: CIENEBA

Soil Surface Texture: sandy loam

Hydrologic Group: Class C - Slow infiltration rates. Soils with layers impeding downward movement of water, or soils with moderately fine or fine textures.

Soil Drainage Class: Somewhat excessively drained

Hydric Status: Not hydric

Corrosion Potential - Uncoated Steel: Low

Depth to Bedrock Min: > 0 inches

Depth to Watertable Min: > 0 inches

Soil Layer Information							
Layer	Boundary		Soil Texture Class	Classification		Saturated hydraulic conductivity micro m/sec	Soil Reaction (pH)
	Upper	Lower		AASHTO Group	Unified Soil		
1	0 inches	7 inches	sandy loam	Silt-Clay Materials (more than 35 pct. passing No. 200), Silty Soils.	Not reported	Max: 0.42 Min: 0	Max: Min:
2	7 inches	11 inches	weathered bedrock	Silt-Clay Materials (more than 35 pct. passing No. 200), Silty Soils.	Not reported	Max: 0.42 Min: 0	Max: Min:

#### Soil Map ID: 2

Soil Component Name: CALLEGUAS

Soil Surface Texture: clay loam

Hydrologic Group: Class D - Very slow infiltration rates. Soils are clayey, have a high water table, or are shallow to an impervious layer.

Soil Drainage Class: Well drained



## GEOCHECK® - PHYSICAL SETTING SOURCE SUMMARY

Hydric Status: Not hydric

Corrosion Potential - Uncoated Steel: High

Depth to Bedrock Min: > 0 inches

Depth to Watertable Min: > 0 inches

Soil Layer Information							
Layer	Boundary		Soil Texture Class	Classification		Saturated hydraulic conductivity micro m/sec	Soil Reaction (pH)
	Upper	Lower		AASHTO Group	Unified Soil		
1	0 inches	14 inches	clay loam	Silt-Clay Materials (more than 35 pct. passing No. 200), Silty Soils.	Not reported	Max: 1.4 Min: 0	Max: Min:
2	14 inches	18 inches	weathered bedrock	Silt-Clay Materials (more than 35 pct. passing No. 200), Silty Soils.	Not reported	Max: 1.4 Min: 0	Max: Min:

**Soil Map ID: 3**

Soil Component Name: CAPISTRANO

Soil Surface Texture: sandy loam

Hydrologic Group: Class B - Moderate infiltration rates. Deep and moderately deep, moderately well and well drained soils with moderately coarse textures.

Soil Drainage Class: Well drained

Hydric Status: Not hydric

Corrosion Potential - Uncoated Steel: Low

Depth to Bedrock Min: > 0 inches

Depth to Watertable Min: > 0 inches

## GEOCHECK® - PHYSICAL SETTING SOURCE SUMMARY

Soil Layer Information							
Layer	Boundary		Soil Texture Class	Classification		Saturated hydraulic conductivity micro m/sec	Soil Reaction (pH)
	Upper	Lower		AASHTO Group	Unified Soil		
1	0 inches	27 inches	sandy loam	Granular materials (35 pct. or less passing No. 200), Silty, or Clayey Gravel and Sand.	COARSE-GRAINED SOILS, Sands, Sands with fines, Silty Sand.	Max: 42 Min: 14	Max: 7.3 Min: 5.6
2	27 inches	64 inches	fine sandy loam	Granular materials (35 pct. or less passing No. 200), Silty, or Clayey Gravel and Sand.	COARSE-GRAINED SOILS, Sands, Sands with fines, Silty Sand.	Max: 42 Min: 14	Max: 7.3 Min: 5.6

**Soil Map ID: 4**

Soil Component Name: MYFORD

Soil Surface Texture: sandy loam

Hydrologic Group: Class D - Very slow infiltration rates. Soils are clayey, have a high water table, or are shallow to an impervious layer.

Soil Drainage Class: Moderately well drained

Hydric Status: Not hydric

Corrosion Potential - Uncoated Steel: High

Depth to Bedrock Min: > 0 inches

Depth to Watertable Min: > 0 inches

Soil Layer Information							
Layer	Boundary		Soil Texture Class	Classification		Saturated hydraulic conductivity micro m/sec	Soil Reaction (pH)
	Upper	Lower		AASHTO Group	Unified Soil		
1	0 inches	7 inches	sandy loam	Granular materials (35 pct. or less passing No. 200), Silty, or Clayey Gravel and Sand.	FINE-GRAINED SOILS, Silts and Clays (liquid limit less than 50%), Lean Clay. FINE-GRAINED SOILS, Silts and Clays (liquid limit less than 50%), silt.	Max: 14 Min: 4	Max: 6.5 Min: 6.1

## GEOCHECK® - PHYSICAL SETTING SOURCE SUMMARY

Soil Layer Information							
Layer	Boundary		Soil Texture Class	Classification		Saturated hydraulic conductivity micro m/sec	Soil Reaction (pH)
	Upper	Lower		AASHTO Group	Unified Soil		
2	7 inches	11 inches	sandy clay	Granular materials (35 pct. or less passing No. 200), Silty, or Clayey Gravel and Sand.	FINE-GRAINED SOILS, Silts and Clays (liquid limit less than 50%), Lean Clay. FINE-GRAINED SOILS, Silts and Clays (liquid limit less than 50%), silt.	Max: 14 Min: 4	Max: 6.5 Min: 6.1
3	11 inches	20 inches	sandy clay loam	Granular materials (35 pct. or less passing No. 200), Silty, or Clayey Gravel and Sand.	FINE-GRAINED SOILS, Silts and Clays (liquid limit less than 50%), Lean Clay. FINE-GRAINED SOILS, Silts and Clays (liquid limit less than 50%), silt.	Max: 14 Min: 4	Max: 6.5 Min: 6.1
4	20 inches	64 inches	sandy clay loam	Granular materials (35 pct. or less passing No. 200), Silty, or Clayey Gravel and Sand.	FINE-GRAINED SOILS, Silts and Clays (liquid limit less than 50%), Lean Clay. FINE-GRAINED SOILS, Silts and Clays (liquid limit less than 50%), silt.	Max: 14 Min: 4	Max: 6.5 Min: 6.1
5	64 inches	79 inches	sandy loam	Granular materials (35 pct. or less passing No. 200), Silty, or Clayey Gravel and Sand.	FINE-GRAINED SOILS, Silts and Clays (liquid limit less than 50%), Lean Clay. FINE-GRAINED SOILS, Silts and Clays (liquid limit less than 50%), silt.	Max: 14 Min: 4	Max: 6.5 Min: 6.1

Soil Map ID: 5

Soil Component Name: RIVERWASH

Soil Surface Texture: sand

Hydrologic Group: Class D - Very slow infiltration rates. Soils are clayey, have a high water table, or are shallow to an impervious layer.

Soil Drainage Class:



## GEOCHECK® - PHYSICAL SETTING SOURCE SUMMARY

Hydric Status: All hydric

Corrosion Potential - Uncoated Steel: Not Reported

Depth to Bedrock Min: > 0 inches

Depth to Watertable Min: > 31 inches

Soil Layer Information							
Layer	Boundary		Soil Texture Class	Classification		Saturated hydraulic conductivity micro m/sec	Soil Reaction (pH)
	Upper	Lower		AASHTO Group	Unified Soil		
1	0 inches	5 inches	sand	Granular materials (35 pct. or less passing No. 200), Stone Fragments, Gravel and Sand.	COARSE-GRAINED SOILS, Sands, Sands with fines, Silty Sand.	Max: 141 Min: 42	Max: Min:
2	5 inches	59 inches	stratified coarse sand to sandy loam	Granular materials (35 pct. or less passing No. 200), Stone Fragments, Gravel and Sand.	COARSE-GRAINED SOILS, Sands, Sands with fines, Silty Sand.	Max: 141 Min: 42	Max: Min:

### Soil Map ID: 6

Soil Component Name: CAPISTRANO

Soil Surface Texture: sandy loam

Hydrologic Group: Class B - Moderate infiltration rates. Deep and moderately deep, moderately well and well drained soils with moderately coarse textures.

Soil Drainage Class: Well drained

Hydric Status: Not hydric

Corrosion Potential - Uncoated Steel: Low

Depth to Bedrock Min: > 0 inches

Depth to Watertable Min: > 0 inches

## GEOCHECK® - PHYSICAL SETTING SOURCE SUMMARY

Soil Layer Information							
Layer	Boundary		Soil Texture Class	Classification		Saturated hydraulic conductivity micro m/sec	Soil Reaction (pH)
	Upper	Lower		AASHTO Group	Unified Soil		
1	0 inches	27 inches	sandy loam	Granular materials (35 pct. or less passing No. 200), Silty, or Clayey Gravel and Sand.	COARSE-GRAINED SOILS, Sands, Sands with fines, Silty Sand.	Max: 42 Min: 14	Max: 7.3 Min: 5.6
2	27 inches	64 inches	fine sandy loam	Granular materials (35 pct. or less passing No. 200), Silty, or Clayey Gravel and Sand.	COARSE-GRAINED SOILS, Sands, Sands with fines, Silty Sand.	Max: 42 Min: 14	Max: 7.3 Min: 5.6

**Soil Map ID: 7**

Soil Component Name: MYFORD

Soil Surface Texture: sandy loam

Hydrologic Group: Class D - Very slow infiltration rates. Soils are clayey, have a high water table, or are shallow to an impervious layer.

Soil Drainage Class: Moderately well drained

Hydric Status: Not hydric

Corrosion Potential - Uncoated Steel: High

Depth to Bedrock Min: > 0 inches

Depth to Watertable Min: > 0 inches

Soil Layer Information							
Layer	Boundary		Soil Texture Class	Classification		Saturated hydraulic conductivity micro m/sec	Soil Reaction (pH)
	Upper	Lower		AASHTO Group	Unified Soil		
1	0 inches	11 inches	sandy loam	Granular materials (35 pct. or less passing No. 200), Silty, or Clayey Gravel and Sand.	FINE-GRAINED SOILS, Silts and Clays (liquid limit less than 50%), Lean Clay. FINE-GRAINED SOILS, Silts and Clays (liquid limit less than 50%), silt.	Max: 14 Min: 4	Max: 6.5 Min: 6.1

## GEOCHECK® - PHYSICAL SETTING SOURCE SUMMARY

Soil Layer Information							
Layer	Boundary		Soil Texture Class	Classification		Saturated hydraulic conductivity micro m/sec	Soil Reaction (pH)
	Upper	Lower		AASHTO Group	Unified Soil		
2	11 inches	18 inches	sandy clay	Granular materials (35 pct. or less passing No. 200), Silty, or Clayey Gravel and Sand.	FINE-GRAINED SOILS, Silts and Clays (liquid limit less than 50%), Lean Clay. FINE-GRAINED SOILS, Silts and Clays (liquid limit less than 50%), silt.	Max: 14 Min: 4	Max: 6.5 Min: 6.1
3	18 inches	27 inches	sandy clay loam	Granular materials (35 pct. or less passing No. 200), Silty, or Clayey Gravel and Sand.	FINE-GRAINED SOILS, Silts and Clays (liquid limit less than 50%), Lean Clay. FINE-GRAINED SOILS, Silts and Clays (liquid limit less than 50%), silt.	Max: 14 Min: 4	Max: 6.5 Min: 6.1
4	27 inches	70 inches	sandy clay loam	Granular materials (35 pct. or less passing No. 200), Silty, or Clayey Gravel and Sand.	FINE-GRAINED SOILS, Silts and Clays (liquid limit less than 50%), Lean Clay. FINE-GRAINED SOILS, Silts and Clays (liquid limit less than 50%), silt.	Max: 14 Min: 4	Max: 6.5 Min: 6.1
5	70 inches	79 inches	sandy loam	Granular materials (35 pct. or less passing No. 200), Silty, or Clayey Gravel and Sand.	FINE-GRAINED SOILS, Silts and Clays (liquid limit less than 50%), Lean Clay. FINE-GRAINED SOILS, Silts and Clays (liquid limit less than 50%), silt.	Max: 14 Min: 4	Max: 6.5 Min: 6.1

### LOCAL / REGIONAL WATER AGENCY RECORDS

EDR Local/Regional Water Agency records provide water well information to assist the environmental professional in assessing sources that may impact ground water flow direction, and in forming an opinion about the impact of contaminant migration on nearby drinking water wells.



# GEOCHECK® - PHYSICAL SETTING SOURCE SUMMARY

## WELL SEARCH DISTANCE INFORMATION

<u>DATABASE</u>	<u>SEARCH DISTANCE (miles)</u>
Federal USGS	1.000
Federal FRDS PWS	Nearest PWS within 1 mile
State Database	1.000

## FEDERAL USGS WELL INFORMATION

<u>MAP ID</u>	<u>WELL ID</u>	<u>LOCATION FROM TP</u>
No Wells Found		

## FEDERAL FRDS PUBLIC WATER SUPPLY SYSTEM INFORMATION

<u>MAP ID</u>	<u>WELL ID</u>	<u>LOCATION FROM TP</u>
No PWS System Found		

Note: PWS System location is not always the same as well location.

## STATE DATABASE WELL INFORMATION

<u>MAP ID</u>	<u>WELL ID</u>	<u>LOCATION FROM TP</u>
1	6936	1/4 - 1/2 Mile NE
B4	7045	1/2 - 1 Mile ENE
B5	7043	1/2 - 1 Mile ENE

## OTHER STATE DATABASE INFORMATION

### STATE OIL/GAS WELL INFORMATION

<u>DISTANCE FROM TP (Miles)</u>	<u>DISTANCE FROM TP (Miles)</u>
1/2 - 1 Mile WSW	1/4 - 1/2 Mile SSW
1/2 - 1 Mile SW	

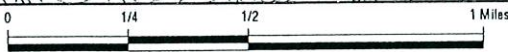


PHYSICAL SETTING SOURCE MAP - 2181254.2s



- County Boundary
- Major Roads
- Contour Lines
- Earthquake Fault Lines
- Airports
- Earthquake epicenter, Richter 5 or greater
- Water Wells
- Public Water Supply Wells
- Cluster of Multiple Icons

- Groundwater Flow Direction
- Indeterminate Groundwater Flow at Location
- Groundwater Flow Varies at Location
- Closest Hydrogeological Data
- Oil, gas or related wells



SITE NAME: Former IRWD Site  
 ADDRESS: Commercentre Drive/Biscayne Parkway Drive  
 Lake Forest CA 92630  
 LAT/LONG: 33.6601 / 117.6827

CLIENT: Leighton and Associates, Inc.  
 CONTACT: Meredith Church  
 INQUIRY #: 2181254.2s  
 DATE: March 28, 2008 5:31 pm



# GEOCHECK® - PHYSICAL SETTING SOURCE MAP FINDINGS

Map ID  
Direction  
Distance  
Elevation

Database      EDR ID Number

1 NE 1/4 - 1/2 Mile Higher	CA WELLS	6936
-------------------------------------	----------	------

**Water System Information:**

Prime Station Code: 06S/04W-09L04 S	User ID: WAT	
FRDS Number: 3310012015	County: Riverside	
District Number: 14	Station Type: WELL/AMBNT/MUN/INTAKE	
Water Type: Well/Groundwater	Well Status: Abandoned	
Source Lat/Long: 333950.0 1174035.0	Precision: 100 Feet (one Second)	
Source Name: SAN JACINTO WELL - ABANDONED		
System Number: 3310012		
System Name: ELSINORE VALLEY MWD		
Organization That Operates System: P.O. BOX 3000 LAKE ELSINORE, CA 92531		
Pop Served: 59200	Connections: 21140	
Area Served: LAKE ELSINORE VICINITY		

A2 SSW 1/2 - 1 Mile Lower	Site ID: 083002096T Groundwater Flow: W Shallow Water Depth: Not Reported Deep Water Depth: Not Reported Average Water Depth: 47 Date: 06/03/1992	AQUIFLOW	38975
------------------------------------	--	----------	-------

A3 SSW 1/2 - 1 Mile Lower	Site ID: 083002096T Groundwater Flow: W Shallow Water Depth: Not Reported Deep Water Depth: Not Reported Average Water Depth: 47 Date: 06/03/1992	AQUIFLOW	38974
------------------------------------	--	----------	-------

B4 ENE 1/2 - 1 Mile Lower	CA WELLS	7045
------------------------------------	----------	------

**Water System Information:**

Prime Station Code: 06S/08W-12L02 S	User ID: TEE	
FRDS Number: 3010091004	County: Orange	
District Number: 08	Station Type: WELL/AMBNT/MUN/INTAKE	
Water Type: Well/Groundwater	Well Status: Active Untreated	
Source Lat/Long: 333950.0 1174000.0	Precision: 10 Feet (1/10 Second)	
Source Name: WELL 04		
System Number: 3010091		
System Name: LOS ALISOS WD		
Organization That Operates System: P O BOX 699 EL TORO 92630		
Pop Served: 38000	Connections: 11645	
Area Served: EL TORO		



# GEOCHECK® - PHYSICAL SETTING SOURCE MAP FINDINGS

Map ID  
Direction  
Distance  
Elevation

Database      EDR ID Number

---

B5		
ENE	CA WELLS	7043
1/2 - 1 Mile		
Lower		

## Water System Information:

Prime Station Code: 06S/08W-01N01 S  
FRDS Number: 3010091005  
District Number: 08  
Water Type: Well/Groundwater  
Source Lat/Long: 333950.0 1174000.0  
Source Name: WELL 07  
System Number: 3010091  
System Name: LOS ALISOS WD  
Organization That Operates System:  
P O BOX 699  
EL TORO 92630  
Pop Served: 38000  
Area Served: EL TORO

User ID: TEE  
County: Orange  
Station Type: WELL/AMBNT/MUN/INTAKE/SUPPLY  
Well Status: Active Untreated  
Precision: 0.5 Mile (30 Seconds)

Connections: 11645

# GEOCHECK® - PHYSICAL SETTING SOURCE MAP FINDINGS

Direction \_\_\_\_\_ Database \_\_\_\_\_ EDR ID Number \_\_\_\_\_  
 Distance \_\_\_\_\_

**WSW**  
 1/2 - 1 Mile OIL\_GAS CAOG30000008493

Apinumber:	05901203	Operator:	CalResources LLC
Lease:	El Toro Corehole	Well no:	17
Field:	ORANGE COUNTY	Caoilgas m2 area:	Not Reported
Map:	W1-4	Status cod:	006
Source:	hud		
Latitude:	33.656478		
Longitude:	-117.691191		
Td:	2048		
Sec:	14	Rge:	8W
Twn:	6S		
Bm:	SB		
X coord1:	0		
Y coord1:	0		
Zone:	Not Reported	Spuddate:	12/12/1968 00:00:00
Abanddate:	12/30/1899 00:00:00	Comments:	Not Reported
District:	1	Mapinfo id:	28505
Site id:	CAOG30000008493		

**SSW**  
 1/4 - 1/2 Mile OIL\_GAS CAOG30000008478

Apinumber:	05901074	Operator:	Morton and Sons
Lease:	El Toro Co.	Well no:	14-1
Field:	ORANGE COUNTY	Caoilgas m2 area:	Not Reported
Map:	W1-4	Status cod:	006
Source:	hud		
Latitude:	33.656143		
Longitude:	-117.683832		
Td:	6528		
Sec:	14	Rge:	8W
Twn:	6S		
Bm:	SB		
X coord1:	0		
Y coord1:	0		
Zone:	Not Reported	Spuddate:	12/12/1968 00:00:00
Abanddate:	12/30/1899 00:00:00	Comments:	Not Reported
District:	1	Mapinfo id:	28504
Site id:	CAOG30000008478		

**SW**  
 1/2 - 1 Mile OIL\_GAS CAOG30000008388

# GEOCHECK® - PHYSICAL SETTING SOURCE MAP FINDINGS

Apinumber:	05901204	Operator:	CalResources LLC
Lease:	El Toro Corehole	Well no:	18
Field:	ORANGE COUNTY	Caoilgas m2 area:	Not Reported
Map:	W1-4	Status cod:	006
Source:	hud		
Latitude:	33.651601		
Longitude:	-117.691753		
Td:	2464		
Sec:	14		
Twn:	6S	Rge:	8W
Bm:	SB		
X coord1:	0		
Y coord1:	0		
Zone:	Not Reported	Spuddate:	12/12/1968 00:00:00
Abanddate:	12/30/1899 00:00:00	Comments:	Not Reported
District:	1	Mapinfo id:	28506
Site id:	CAOG30000008388		



# GEOCHECK® - PHYSICAL SETTING SOURCE MAP FINDINGS RADON

## AREA RADON INFORMATION

State Database: CA Radon

### Radon Test Results

Zip	Total Sites	> 4 Pci/L	Pct. > 4 Pci/L
92630	18	0	0.00

Federal EPA Radon Zone for ORANGE County: 3

- Note: Zone 1 indoor average level > 4 pCi/L.  
 : Zone 2 indoor average level >= 2 pCi/L and <= 4 pCi/L.  
 : Zone 3 indoor average level < 2 pCi/L.

---

Federal Area Radon Information for Zip Code: 92630

Number of sites tested: 2

Area	Average Activity	% <4 pCi/L	% 4-20 pCi/L	% >20 pCi/L
Living Area - 1st Floor	0.400 pCi/L	100%	0%	0%
Living Area - 2nd Floor	Not Reported	Not Reported	Not Reported	Not Reported
Basement	Not Reported	Not Reported	Not Reported	Not Reported



# PHYSICAL SETTING SOURCE RECORDS SEARCHED

## OTHER

**Airport Landing Facilities:** Private and public use landing facilities  
Source: Federal Aviation Administration, 800-457-6656

**Epicenters:** World earthquake epicenters, Richter 5 or greater  
Source: Department of Commerce, National Oceanic and Atmospheric Administration

**California Earthquake Fault Lines:** The fault lines displayed on EDR's Topographic map are digitized quaternary fault lines, prepared in 1975 by the United State Geological Survey. Additional information (also from 1975) regarding activity at specific fault lines comes from California's Preliminary Fault Activity Map prepared by the California Division of Mines and Geology.

## STREET AND ADDRESS INFORMATION

© 2008 Tele Atlas North America, Inc. All rights reserved. This material is proprietary and the subject of copyright protection and other intellectual property rights owned by or licensed to Tele Atlas North America, Inc. The use of this material is subject to the terms of a license agreement. You will be held liable for any unauthorized copying or disclosure of this material.

# PHYSICAL SETTING SOURCE RECORDS SEARCHED

## LOCAL / REGIONAL WATER AGENCY RECORDS

### FEDERAL WATER WELLS

#### **PWS: Public Water Systems**

Source: EPA/Office of Drinking Water

Telephone: 202-564-3750

Public Water System data from the Federal Reporting Data System. A PWS is any water system which provides water to at least 25 people for at least 60 days annually. PWSs provide water from wells, rivers and other sources.

#### **PWS ENF: Public Water Systems Violation and Enforcement Data**

Source: EPA/Office of Drinking Water

Telephone: 202-564-3750

Violation and Enforcement data for Public Water Systems from the Safe Drinking Water Information System (SDWIS) after August 1995. Prior to August 1995, the data came from the Federal Reporting Data System (FRDS).

#### **USGS Water Wells: USGS National Water Inventory System (NWIS)**

This database contains descriptive information on sites where the USGS collects or has collected data on surface water and/or groundwater. The groundwater data includes information on wells, springs, and other sources of groundwater.

### STATE RECORDS

#### **Water Well Database**

Source: Department of Water Resources

Telephone: 916-651-9648

#### **California Drinking Water Quality Database**

Source: Department of Health Services

Telephone: 916-324-2319

The database includes all drinking water compliance and special studies monitoring for the state of California since 1984. It consists of over 3,200,000 individual analyses along with well and water system information.

## OTHER STATE DATABASE INFORMATION

#### **California Oil and Gas Well Locations**

Source: Department of Conservation

Telephone: 916-323-1779

### RADON

#### **State Database: CA Radon**

Source: Department of Health Services

Telephone: 916-324-2208

Radon Database for California

#### **Area Radon Information**

Source: USGS

Telephone: 703-356-4020

The National Radon Database has been developed by the U.S. Environmental Protection Agency (USEPA) and is a compilation of the EPA/State Residential Radon Survey and the National Residential Radon Survey. The study covers the years 1986 - 1992. Where necessary data has been supplemented by information collected at private sources such as universities and research institutions.

#### **EPA Radon Zones**

Source: EPA

Telephone: 703-356-4020

Sections 307 & 309 of IRAA directed EPA to list and identify areas of U.S. with the potential for elevated indoor radon levels.



# PHYSICAL SETTING SOURCE RECORDS SEARCHED

## TOPOGRAPHIC INFORMATION

### **USGS 7.5' Digital Elevation Model (DEM)**

Source: United States Geologic Survey

EDR acquired the USGS 7.5' Digital Elevation Model in 2002 and updated it in 2006. The 7.5 minute DEM corresponds to the USGS 1:24,000- and 1:25,000-scale topographic quadrangle maps. The DEM provides elevation data with consistent elevation units and projection.

### **Scanned Digital USGS 7.5' Topographic Map (DRG)**

Source: United States Geologic Survey

A digital raster graphic (DRG) is a scanned image of a U.S. Geological Survey topographic map. The map images are made by scanning published paper maps on high-resolution scanners. The raster image is georeferenced and fit to the Universal Transverse Mercator (UTM) projection.

## HYDROLOGIC INFORMATION

**Flood Zone Data:** This data, available in select counties across the country, was obtained by EDR in 1999 from the Federal Emergency Management Agency (FEMA). Data depicts 100-year and 500-year flood zones as defined by FEMA.

**NWI:** National Wetlands Inventory. This data, available in select counties across the country, was obtained by EDR in 2002 and 2005 from the U.S. Fish and Wildlife Service.

## HYDROGEOLOGIC INFORMATION

### **AQUIFLOW<sup>R</sup> Information System**

Source: EDR proprietary database of groundwater flow information

EDR has developed the AQUIFLOW Information System (AIS) to provide data on the general direction of groundwater flow at specific points. EDR has reviewed reports submitted to regulatory authorities at select sites and has extracted the date of the report, hydrogeologically determined groundwater flow direction and depth to water table information.

## GEOLOGIC INFORMATION

### **Geologic Age and Rock Stratigraphic Unit**

Source: P.G. Schruben, R.E. Arndt and W.J. Bawiec, Geology of the Conterminous U.S. at 1:2,500,000 Scale - A digital representation of the 1974 P.B. King and H.M. Beikman Map, USGS Digital Data Series DDS - 11 (1994).

### **STATSGO: State Soil Geographic Database**

Source: Department of Agriculture, Natural Resources Conservation Services

The U.S. Department of Agriculture's (USDA) Natural Resources Conservation Service (NRCS) leads the national Conservation Soil Survey (NCSS) and is responsible for collecting, storing, maintaining and distributing soil survey information for privately owned lands in the United States. A soil map in a soil survey is a representation of soil patterns in a landscape. Soil maps for STATSGO are compiled by generalizing more detailed (SSURGO) soil survey maps.

### **SSURGO: Soil Survey Geographic Database**

Source: Department of Agriculture, Natural Resources Conservation Services (NRCS)

Telephone: 800-672-5559

SSURGO is the most detailed level of mapping done by the Natural Resources Conservation Services, mapping scales generally range from 1:12,000 to 1:63,360. Field mapping methods using national standards are used to construct the soil maps in the Soil Survey Geographic (SSURGO) database. SSURGO digitizing duplicates the original soil survey maps. This level of mapping is designed for use by landowners, townships and county natural resource planning and management.



#



**DOGGR RECORDS**



059-01074

DIVISION OF OIL AND GAS RECEIVED

DIVISION OF OIL AND GAS

FORM 105. CALIFORNIA STATE PRINTING OFFICE

STATE OF CALIFORNIA LOS ANGELES, CALIFORNIA DEPARTMENT OF NATURAL RESOURCES

DIVISION OF OIL AND GAS

Notice of Intention to Drill New Well

This notice must be given and surety bond filed before drilling begins

Morton and Sons

Long Beach Calif. 24 Oct. 19 47

DIVISION OF OIL AND GAS

Los Angeles Calif.

In compliance with Section 3203, Chapter 93, Statutes of 1939, notice is hereby given that it is our intention to commence the work of drilling well No. El Toro Co. 14-1, Sec. 14, T. 6S, R. 8W, SB B. & M., XX Field, Orange County.

JLW

Lease consists of All of Section 14-65-8W. S.B.B.M.

The well is 2760' 5500' feet N. or S., and 500' 540' feet E. or W. from SW corner of Section 14 \*

(Give location in distance from section corners or other corners of legal subdivision)

Elevation of ground above sea level 591.2 feet.

All depth measurements taken from top of Kelley Bushing (47-6528) unconf. above, which is 11 feet above ground.

We estimate that the first productive oil or gas sand should be encountered at a depth of about 4000 feet.

We propose to use the following strings of casing, either cementing or landing them as herein indicated:

Table with 5 columns: Size of Casing, Inches; Weight, Lb. Per Foot; Grade and Type; Depth; Landed or Cemented. Row 1: 13 3/8", 48#, H-40, 500, Cemented. Row 2: Additional casing program to be determined from results obtained while drilling, subject to approval of the D.O.G.

Please designate this well as a prospect well

Well is to be drilled with rotary tools.

Handwritten notes: Topo 73 JLW, JLW, 120133

It is understood that if changes in this plan become necessary we are to notify you before cementing or landing casing.

\*450' S., 2450' W. from the NE cor. of projected Sec. 14 (Cor. let. 2-6-51es)

Address 1241 East Burnett Street Long Beach, Calif.

Morton and Sons

Telephone number 48509

By Robert S. Morton (Name of Operator)



STATE OF CALIFORNIA  
DEPARTMENT OF NATURAL RESOURCES

DIVISION OF OIL AND GAS

Special Report on Operations Witnessed

No. T \_\_\_\_\_

Mr. \_\_\_\_\_ Calif. \_\_\_\_\_ 19 \_\_\_\_\_

Agent for MORTON AND SONS Calif. \_\_\_\_\_

DEAR SIR:

Operations at your well No. "El Toro" 14-1 Sec. 14, T. 65, R. 8W, S.B. B. & M.,  
Field, in Orange County, were witnessed by  
J. R. Thomas, Inspector, representative of the supervisor,  
on January 3, 1949. There was also present \_\_\_\_\_

Casing Record	Junk

The operations were performed for the purpose of \_\_\_\_\_

The inspector arrived at the well at 2:30 p.m. and Mr. \_\_\_\_\_ reported:

Memo

Cellar filled and location graded over.  
No evidence of gas or oil leak.

R. D. BUSH  
State Oil and Gas Supervisor

By \_\_\_\_\_ Deputy

DIVISION OF OIL AND GAS  
RECEIVED  
FEB 27 1948

DIVISION OF OIL AND GAS

WELL SUMMARY REPORT

LOS ANGELES, CALIFORNIA

Operator Morton and Sons Field XXX

Well No. El Toro Co. I4-I Sec. I4, T. 65, R. 8W, SB B. & M.

Location 2760 and 540 of SW cor. sec I4\* Elevation of derrick floor above sea level 591 feet.

In compliance with the provisions of Chapter 93, Statutes of 1939, the information given herewith is a complete and correct record of the present condition of the well and all work done thereon, so far as can be determined from all available records.

Date Feb. 16, 1948 Signed W.A. Morton

W.A. Morton (Engineer or Geologist) E.W. Sauder (Superintendent) Title Agent (President, Secretary or Agent)

\*Commenced drilling 31 October, 1947 Completed drilling 14 Jan., 1948 Drilling tools Cable Rotary

Total depth 6528 Plugged depth \_\_\_\_\_  
Junk none \_\_\_\_\_  
GEOLOGICAL MARKERS \_\_\_\_\_ DEPTH \_\_\_\_\_

\*450 feet south and 2450 feet west from the northeast corner of projected Sec. 14. (Cor. let. 2/6/51 es)

Commenced producing never produced (date) \_\_\_\_\_  
Flowing/gas lift/pumping (cross out unnecessary words) \_\_\_\_\_

	Clean Oil bbl. per day	Gravity Clean Oil	Per Cent Water including emulsion	Gas Mcf. per day	Tubing Pressure	Casing Pressure
Initial production						
Production after 30 days						

CASING RECORD (Present Hole)

of Casing (P. I.)	Depth of Shoe	Top of Casing	Weight of Casing	New or Second Hand	Seamless or Lapweld	Grade of Casing	Size of Hole Casing landed in	Number of Sacks of Cement	Depth of Cementing if through perforations
<u>13 3/4"</u>	<u>502</u>	<u>surf</u>	<u>48#</u>	<u>new</u>	<u>seamless</u>	<u>H-40</u>	<u>17 1/2"</u>	<u>310</u>	
<u>7"</u>	<u>579I</u>	<u>surf</u>	<u>23#</u>	<u>new</u>	<u>seamless</u>	<u>J 55</u>	<u>11"</u>	<u>500</u>	

PERFORATIONS

of Casing	From	To	Size of Perforations	Number of Rows	Distance Between Centers	Method of Perforations
	ft.	ft.	<u>none</u>			
	ft.	ft.				
	ft.	ft.				
	ft.	ft.				
	ft.	ft.				

Electrical Log Depths 579I to 65I4 (no log on upper hole) (Attach Copy of Log)



SUBMIT IN DUPLICATE  
STATE OF CALIFORNIA  
DEPARTMENT OF NATURAL RESOURCES

DIVISION OF OIL AND GAS

DIVISION OF OIL AND GAS  
RECEIVED  
FEB 27 1948

History of Oil or Gas Well

LOS ANGELES, CALIFORNIA

OPERATOR Morton and Sons FIELD 11A  
Well No. El Toro Co., 14-I, Sec. 14, T. 6S, R. 8W, sb. B. & M.

Signed HA Morton

Date Feb. 16, 1948 Title Agent (President, Secretary or Agent)

Use this form in reporting all important operations at the well, together with the dates thereof, in the order of their performance. Such operations include drilling, re-drilling, deepening, plugging, or altering casing as by perforating, shooting, or pulling. Include in your report size of hole drilled, re-drilled, or deepened; size, weight and length of casing landed, cemented, or removed, amount and location of perforations; number of sacks of cement used in cementing or plugging operations, number of feet of cement drilled out of casing, location of top and bottom of cement plugs. If the well was dynamited, give date, dimensions and weight of all shots. If tests were made give interval tested and results of tests, such as, amount and nature of fluids recovered.

Date	Operations
31 Oct 1947	Spud in 4:00 A.M. Drill 12 1/2" hole to 500'. Open hole to 17 1/2" to 507'.
1 Nov	Run and cement 14 jts 13 3/8" O.D. csg with 210 sax Victor Construction cement. Casing froze at 502'. Circ. press 200 # Bump plug with 350 psi.
2 Nov	Rig B.O.P.E. and test same with 1000 psi for 15 min. o.k. Drill 11" hole to 3500'
13 Nov	Core 11" hole to 3785'
18 Nov	Drill 11" hole to 5723'
20 Dec	Develop hole in surface casing just below landing base. Patch same. Drill 11" hole to 5791'.
22 Dec	Run and cement 137 jts (5805.8') of 7", 23#, J-55 Nat'l smss csg @ 5791' with 500 sax of Vic. Con. cement using one top and one bottom plug, 116 slurry. Circ pressure 250-300 psi, bump plug with 800psi. Cementing time 2 hours. Halliburton
23 Dec	Land casing with suspended weight of pipe.
26 Dec	Drill out cement. Top of cement @ 5750, equiv. to 9 sax of cement. Drill 6 1/8" hole to 6514'.
14 Jan 1948	Core 6 1/8" hole to 6528' T.D. Fill hole with heavy mud, cap at surface and suspend operations.

MAP BOOK	CARDS	INDEX	FORMS
			131

SUBMIT IN DUPLICATE

STATE OF CALIFORNIA  
DEPARTMENT OF NATURAL RESOURCES

DIVISION OF OIL AND GAS

Subsequent Work Report

DIVISION OF OIL AND GAS  
SEP 27 1948

LOS ANGELES DISTRICT OFFICE

OPERATOR Morton and Sons FIELD Orange  
Well No. El Toro Co. 14-1, Sec. 14, T. 6 S., R. 8 W., S. P. B. & M.

In compliance with the provisions of Chapter 93, Statutes 1939, the information given herewith is a complete and correct record of all work done on the well since the previous record, dated \_\_\_\_\_

November 1, 1948, was filed.

*W. A. Morton*  
SIGNED W. A. Morton

Date December 6, 1948

Title Agent  
(President, Secretary or Agent)

Outline in the order of performance, together with the dates thereof, all important operations which alter the condition of the well. Include such information as depth at which redrilling operations were started, size of hole redrilled or deepened; size of pipe, amount of perforations in casing, weight and length of casing landed or cemented or removed; number of sacks of cement used in cementing or plugging operations and exact position thereof. If the well was dynamited, give date, size, position and number of shots. If plugs or bridges were put in to test for water, state kind of material used, position and results of pumping or bailing.

Date

- Nov. 5 Shot 7" O.D. Casing @ 2024', 1712', and 1411', and pulled from latter depth. Pulled up 30' and dumped 20' cement plug.
- Nov. 8 Drove wooden plug to 522' and dumped 33 sax of cement.
- Nov. 9 Top of plug at 481'. Plugged 13 3/8" casing @ surface and abandoned.
- Dec. 3 Welded steel cap to top of 13 3/8".

MAP	MAP BOOK	CARDS	BOND	FORMS	
				114	121
					<i>[Signature]</i>



FEB 27 1948

DIVISION OF OIL AND GAS

LOS ANGELES, CALIFORNIA

LOG AND CORE RECORD OF OIL OR GAS WELL

Operator Morton and Sons Field XXX

Well No. El Toro Co. 14-I Sec. 14, T. 65, R. SW, SB B. & M.

FORMATIONS PENETRATED BY WELL

DEPTH TO		Thickness	Drilled or Cored	Recovery	DESCRIPTION
Top of Formation	Bottom of Formation				
0	502	502	drill	-	surface sands and blue clays and gravel boulders.
502	3500	2998	drill	-	blue and green shales; conglomerate sands and black shales.
3500	3505	5'	core	1'	Dark gray to black silty shale, fractured and recemented lime in fractured plane. Some shaleside
3505	3515	10'	"	1 1/2'	Shale as above
3515	3520	5'	"	10'	Shale as above
3520	3531	11'	"	10'	"
3531	3541	10'	"	10'	"
3541	3547	6'	"	6'	"
3547	3557	10'	"	10'	"
3557	3567	10'	"	10'	"
3567	3572	5'	"	3'	"
3572	3582	10'	"	10'	"
3582	3592	10'	"	10'	"
3592	3602	10'	"	4'	"
3602	3607	5'	"	3'	"
3607	3612	5'	"	3'	"
3612	3617	5'	"	3'	"
3617	3623	6'	"	1 1/2'	"
3623	3628	5'	"	5'	"

DIVISION OF OIL AND GAS  
RECEIVED  
FEB 27 1948

DIVISION OF OIL AND GAS

LOG AND CORE RECORD OF OIL OR GAS WELL LOS ANGELES, CALIFORNIA

Operator..... Field.....

Well No..... Sec....., T....., R....., B. & M.....

FORMATIONS PENETRATED BY WELL

DEPTH TO		Thickness	Drilled or Cored	Recovery	DESCRIPTION
Top of Formation	Bottom of Formation				
3628	3637	10'	core	3 1/2'	Shale as above  Shale as above except there is an apparent dip of 12°-18°, average 15°. No evidence of fracture or slickensides
3637	3644	7'	"	8'	
3644	3654	10'	"	2'	
3654	3659	5'	"	5'	
3659	3664	5'	"	5'	
3664	3667	3'	"	3'	
3667	3677	10'	"	10'	
3677	3687	10'	"	10'	
3687	3697	10'	"	10'	
3697	3707	10'	"	10'	
3707	3717	10'	"	10'	
3717	3727	10'	"	7'	
3727	3733	6'	"	5'	
3733	3738	5'	"	11'	
3738	3743	5'	"	11'	
3743	3745	2'	"	0'	

STATE OF CALIFORNIA  
DEPARTMENT OF NATURAL RESOURCES

DIVISION OF OIL AND GAS

DIVISION OF OIL AND GAS  
RECEIVED  
FEB 27 1948

LOG AND CORE RECORD OF OIL OR GAS WELLS  
LOS ANGELES, CALIFORNIA

Operator..... Field.....

Well No..... Sec....., T....., R....., B. & M.....

FORMATIONS PENETRATED BY WELL

DEPTH TO		Thickness	Drilled or Cored	Recovery	DESCRIPTION
Top of Formation	Bottom of Formation				
3745	3755	10'		10'	shale as above
3755	3765	10'		10'	
3765	3775				black shale; sands and hard conglomerate.
3775	3785				
3785	5791	2006	drill	none	
5791	6514	723'	drill		Hard conglomerate and some reddish clay.
6514	6528	12'	core	6'	6' Hard dark green shist. Fractured.

ALL INFORMATION CONTAINED HEREIN IS UNCLASSIFIED  
DATE 11/19/01 BY SP-10/BJW/STP



**- NOTE -**

DO NOT DISCARD THIS PAGE  
MAINTAIN IN PRESENT SEQUENCE

1015 West Olympic Boulevard  
Los Angeles 15, California  
February 6, 1951

Mr. Delbert D. Coker  
17581 Newland Avenue  
Huntington Beach, California

Agent for Morton and Sons

Dear Sir:

In regard to the location of your well No. "El Toro Co." 14-1, in Sec. 14, T. 6 S., R. 8 W., S. B. L. & M., Orange County, it has come to our attention that when the well is plotted in accordance with the survey by Hoy and Hoy of Santa Ana, the correct location is 450 feet south and 2450 feet west from the northeast corner of projected Sec. 14.

We are therefore correcting our records accordingly.

Yours truly,

*E. F. Mussen*  
Deputy Supervisor  
*ma*

cc - Mr. R. B. Bush (2)  
Morton and Sons  
Long Beach

JLR:MS

Corrections Made as Follows:	By Whom
Form 114.....	.....
" 115.....	.....
" 121.....	.....
" 123.....	.....
Cards.....	.....
Production.....	.....
Well Records.....	<i>ma</i>
Field Maps.....	<i>JLR</i>
Map Book.....	<i>ma</i>

STATE OF CALIFORNIA  
SAN FRANCISCO 11

Inter-Departmental Communication

DIVISION OF OIL AND GAS  
RECEIVED  
DEC 31 1948

LOS ANGELES, CALIFORNIA

Date: December 30, 1948

To: E. H. Musser  
Los Angeles

From: State Division of Oil and Gas

Have all conditions been fulfilled, and if so,  
when, under bond No. 126133, covering Morton & Sons well No.  
"El Toro Co." 14-1, Sec. 14, T. 6 S., R. 8 W., S. B. B. & M.?

*R. D. Bush*

State Oil and Gas Supervisor

*OK release bond as of 12-31-48*

*DRK  
1-4-49*

W. W. HOY  
MEMBER AMERICAN SOCIETY  
CIVIL ENGINEERS  
STATE REG. CIVIL ENG. No. 70  
RES. PHONE 4111-W

JOHN M. HOY  
LICENSED LAND SURVEYOR NO. 2326  
RES. PHONE 4761-R

W. W. HOY AND JOHN M. HOY  
CIVIL ENGINEER AND SURVEYOR

112 WEST FIFTH STREET  
SANTA ANA, CALIFORNIA  
PHONE 6506

October 22, 1947.

DESCRIPTION OF WELL LOCATION FOR MORTON AND SONS

---

Located <sup>in</sup> Lot 10 of the Rancho Canada de Los Alisos, being 5527.89 feet North  $86^{\circ} 55' 20''$  East from a 4 x 4 post in the Northwesterly line of the said Rancho Canada de Los Alisos, said post marking the Easterly corner of Lot 304, Block 173 of the Irvine Subdivision as shown on map thereof recorded in Book 1, Page 38, Miscellaneous Record Maps of Orange County, California.

The elevation of offset stake is 581.2.

The elevation of well is 582.6.



RECEIVED  
1948-11-01  
LOS ANGELES, CALIFORNIA

STATE OF CALIFORNIA  
DEPARTMENT OF NATURAL RESOURCES  
DIVISION OF OIL AND GAS

Notice of Intention to Deepen, Redrill, Plug or Alter Casing in Well

This notice must be given fifteen days before work begins when possible

Long Beach Calif. 1 Nov. 1948 19

DIVISION OF OIL AND GAS

Los Angeles Calif.

In compliance with Section 3203, Chapter 93, Statutes of 1939, notice is hereby given that it is our intention to commence the work of ~~deepening, redrilling, plugging or~~ altering casing at well No. El Toro Co. 14-1

~~(Cross out date(s) of old)~~  
\_\_\_\_\_, Sec. 14, T. 6S, R. 8W, S.B. \_\_\_\_\_ B. & M.  
XXX Field, Orange County.

The present condition of the well is as follows:

1. Complete casing record.
  - a) 17 1/2" rotary hole drilled to 507'.
  - b) 13 3/8" casing, 48#, seamless H 40, cemented @ 502' with 310 sack of construction cement on 1 November 1947.
  - c) 11" rotary hole drilled to 5791'.
  - d) 7", 23#, J 55 casing cemented @ 5791 w 500 sack of construction cement on 23 Dec. 1947.
  - e) Drill 6 1/8" hole to present T.D. of 6526'.
  - f) Run ELD to bottom. THERE WAS NO EVIDENCE OF SALINE WATERS AT ANY DEPTH IN THIS WELL OR IN MORTON and SONS IRVINE 15-1 DRILLED ONE MILE TO THE WEST
  - g) Fill hole with heavy mud, weld cap at surface, suspend operations. 14 Jan  
Never produced
2. Last produced \_\_\_\_\_  
(Date) (Net Oil) (Gravity) (Cut)

The proposed work is as follows:

- a) Shoot and pull 7" casing from as deep as possible. placing a 20' plug on stub of 7" before pulling casing more than 30'.
- b) Place a 20' cement plug 20' in and 20' out of shoe of 13 3/8" @ 502'.
- c) Weld cap on 13 3/8" @ surface.
- d) DGC to witness location and hardness of plug @ 480' and at stub of 7", wherever that may be.

*atandon*

MAP	MAP BOOK	CARDS	BOND	FORMS	
			126133	114	121

Morton and Sons

(Name of Operator)

By [Signature]

W. A. Norton

STATE OF CALIFORNIA  
DEPARTMENT OF NATURAL RESOURCES  
**DIVISION OF OIL AND GAS**

Special Report on Operations Witnessed

No. T 1-48989

Mr. John W. Jordan Los Angeles 15, Calif. November 18, 19 48  
Huntington Beach, Calif.  
Agent for MORTON AND SONS

DEAR SIR:

Operations at your well No. "El Toro Co." 14-1 Sec. 14, T. 6 S., R. 8 W., S. E. B. & M.,  
(El Toro Area) ~~XXXX~~, in Orange County, were witnessed by  
M. B. Albright, Inspector, representative of the supervisor,  
on November 5, 19 48. There was also present V. Tull, Driller;

<u>R. Dunning, Helper.</u>	
Casing Record <u>13-3/8" cem. 502'; 7" cem. 5791'</u> , shot	Junk <u>None</u>
at <u>2024', 1712', 1411'</u> , and pulled from <u>1411'</u> . T.D.	
<u>6526', plugged with cement 1411'-1391'±.</u>	

The operations were performed for the purpose of testing the location and hardness of a cement plug placed from 1411' to 1391'± in the process of abandonment.

- The inspector arrived at the well at 6:00 p.m. and Mr. Tull reported:
1. The 7" casing was shot at 2024', 1712', 1411', and was pulled up 15'.
  2. A wooden plug was driven to 1411'.

THE INSPECTOR NOTED THAT 8 sacks of cement was dumped into the hole at 1411', calculated to fill to the depth of 1391'.

The operations were completed at 8:00 p.m.

THE PLUGGING OPERATIONS AS WITNESSED AND REPORTED ARE APPROVED.

MBA:OH  
*ma/oh*

cc- Morton & Sons  
Long Beach

R. D. BUSH  
State Oil and Gas Supervisor  
By E. H. Messer Deputy



STATE OF CALIFORNIA  
DEPARTMENT OF NATURAL RESOURCES

**DIVISION OF OIL AND GAS**

**Special Report on Operations Witnessed**

No. T 1-47491

Mr. Warren A. Morton Los Angeles 15, Calif. December 5, 19 47  
Balboa, Calif.  
Agent for MORTON AND SONS

DEAR SIR:

Operations at your well No. "El Toro Co." 14-1 Sec. 14, T. 6 S., R. 8 W., S. B. B. & M.,  
(El Toro Area) exists in Orange County, were witnessed by  
John M. Carls, Inspector, representative of the supervisor,  
on November 24, 19 47. There was also present W. E. Sauder, Drilling Foreman  
E. C. Brewer, Driller  
Casing Record 13-3/8" cem. 502'; T.D. 4408' Junk None

The operations were performed for the purpose of inspecting blowout prevention equipment and installation.

The inspector arrived at the well at 3:30 p.m. and Mr. Sauder reported:

1. A 17-1/2" rotary hole was drilled from surface to 507'.
2. On November 1, 1947, 13-3/8" 48 lb. casing was cemented at 502' with 310 sacks of cement.
3. An 11" rotary hole was drilled from 507' to 4408'.

THE INSPECTOR NOTED that the well was equipped with the following blowout prevention equipment:

1. A Shaffer double cellar control gate for closing in the well with the drill pipe out of the hole and for closing around the 4-1/2" drill pipe.
2. A Hydril blowout preventer for closing around the 4-1/2" drill pipe.
3. The controls for the above equipment were located outside the derrick.
4. A 3" mud fill-up line, with a 3" high pressure gate valve, into the 13-3/8" casing, below the above equipment.

The inspection was completed at 4:15 p.m.

THE BLOWOUT PREVENTION EQUIPMENT AND INSTALLATION ARE APPROVED.

*12/22/47 - Coleman Morton / Reak, phone, T.D. 5700', have several bad spots in hole & fear possible keyseating. No oil or gas shows penetrated. datee want set 7" protection string, and then drill on to base. cc - Company Are undecided if they want to make w.s.o. test. Told him that we would witness w.s.o. test if they made one else. Long Beach we would have to witness splice test & shut off their hole. in case a liner was run later.*

JMC:ES

R. D. BUSH  
State Oil and Gas Supervisor

By E. H. Mussen Deputy



STATE OF CALIFORNIA  
DEPARTMENT OF NATURAL RESOURCES  
DIVISION OF OIL AND GAS

Report on Proposed Operations

No. P 1-44336

Los Angeles 15, Calif. December 26, 1947

Mr. Warren A. Morton

Balboa, Calif.

Agent for MORTON AND SONS

DEAR SIR:

Your supplementary proposal to drill Well No. "El Toro Co." 14-1, Section 14, T6 S., R. 8 W., S.B. B. & M., (El Toro Area) Field, Orange County, dated Dec. 22, 1947, received Dec. 23, 1947, has been examined in conjunction with records filed in this office.

Present conditions as shown by the records and the proposal are as follows:

THE NOTICE STATES:

"The new conditions are as follows:

1. A 17-1/2" rotary hole was drilled from surface to 507'.
2. 13-3/8" 48# casing was cemented at 502' with 310 sks. of cement.
3. An 11" rotary hole was drilled from 507' to 5774'.

PROPOSAL:

"We now propose

1. To run in and cement a 7" 23# string of protective casing to 5774'.
2. Deepen hole with 6-1/8" rotary tools."

DECISION:

THE PROPOSAL IS APPROVED.

SHR:OH

cc- Company  
Long Beach

R. D. BUSH  
State Oil and Gas Supervisor

By E. H. Musser Deputy  
EHB

FORM III.  
CALIFORNIA STATE PRINTING OFFICE

Records Filed

100 \_\_\_\_\_  
101 \_\_\_\_\_  
103 \_\_\_\_\_  
E. Log. \_\_\_\_\_

STATE OF CALIFORNIA  
DEPARTMENT OF NATURAL RESOURCES  
**DIVISION OF OIL AND GAS**

**Report on Proposed Operations**

No. P 1-44069

Los Angeles 15, Calif. October 29, 1947

MR. Warren A. Morton

Balboa, Calif.

Agent for MORTON AND SONS

DEAR SIR:

Your proposal to drill Well No. "El Toro Co." 14-1, Section 14, T. 6 S., R. 8 W., S. B. B. & M., (El Toro Area) ~~xxxx~~ Orange County, dated Oct. 24, 1947, received Oct. 24, 1947, has been examined in conjunction with records filed in this office.

Present conditions as shown by the records and the proposal are as follows:

THE NOTICE STATES: 450' S., 2450' W. from the NE cor. of projected Sec. 14

"The well is ~~2760 feet N. and 540 feet E. from SW corner of Section 14~~

Elevation of ground above sea level 591.2 feet.

All depth measurements taken from top of Kelley Bushing, which is 11 feet above ground.

We estimate that the first productive oil or gas sand should be encountered at a depth of about 4000 feet."

PROPOSAL:

"We propose to use the following strings of casing, either cementing or landing them as herei

indicated:	Size of Casing	Weight	Grade and Type	Depth	Landed or Cemented
	13 3/8"	48#	H-40	500	Cemented.

Additional casing program to be determined from results obtained while drilling, subject to approval of the D. O. G.

Well is to be drilled with rotary tools.

It is understood that if changes in this plan become necessary we are to notify you before cementing or landing casing."

DECISION:

This division does not have sufficient data available upon which to base an estimate of the depth at which oil- or gas-bearing formations should be encountered in this vicinity, nor the depth at which a water shut-off should be effected.

THE PROPOSED DRILLING PROGRAM IS APPROVED, HOWEVER, PROVIDED THAT

1. Mud fluid consistent with good drilling practice shall be used and the column of mud fluid maintained at all times to the surface, particularly while pulling the drill pipe.
2. Blowout prevention equipment, sufficient to provide a complete close-in of the well under pressure at any time, shall be installed.
3. At least 500' of surface casing shall be cemented in the hole for the purpose of protecting surface or domestic water supplies.
4. Any hole to be sidetracked in any oil or gas zone shall be filled with cement, if possible.
5. A supplementary proposal shall be filed with this division prior to running any additional casing into the hole.
6. THIS DIVISION MUST BE NOTIFIED AS FOLLOWS:
  - (a) To inspect the installed blowout prevention equipment before drilling below 1000'.
  - (b) When oil- or gas-bearing formations are encountered.
  - (c) To examine cores and/or electrical log before running any casing. Other requirements may be specified at that time.

SHR:OH

R. D. BUSH

State Oil and Gas Supervisor

cc- Company  
Long Beach  
Bond No. 126133

By E. H. Messer Deputy



STATE OF CALIFORNIA  
DEPARTMENT OF NATURAL RESOURCES  
DIVISION OF OIL AND GAS

Notice of Intention to Deepen, Redrill, Plug or Alter Casing in Well

This notice must be given fifteen days before work begins when possible

Long Beach Calif. 15 January 1948

DIVISION OF OIL AND GAS

Los Angeles Calif.

In compliance with Section 3203, Chapter 93, Statutes of 1939, notice is hereby given that it is our intention to commence the work of ~~deepening, redrilling, plugging or altering casing~~ <sup>suspending operations</sup> at well No. El Tero Co 14-1

(Cross out unnecessary words)  
Sec. 14, T. 6S, R. 8W, SbB. B. & M.  
Field, Orange County.

The present condition of the well is as follows:

1. Complete casing record.
  - a) 17 1/2" Rotary hole drilled to 507'.
  - b) 13 3/8", 48#, H 40 seamless casing cemented @ 502' with 310 sax of con. cement on 1 November 1947.
  - c) 11" Rotary hole drilled to 5791'.
  - d) 7" , 23#, J-55 smlss csg cemented @ 5791 w 500 sax of con. cement on 23 Dec. 1947.
  - e) Drill 6 1/8" hole to present T.D. of 6526'.

2. Last produced Never Produced  
(Date) (Net Oil) (Gravity) (Cut)

The proposed work is as follows:

- a) Fill hole with extra heavy mud.
- b) Weld cap on casing head with outlet to keep hole full of mud.
- c) Suspend operations pending geologic decisions by the operator.
- d) Notify Division of Oil and Gas when a decision is reached to either deepen or abandon hole.

MAP	MAP BOOK	CARDS	BOND	FORMS
				114 121
		126135	ind	end

Morton and Sons

(Name of Operator)

By W.A. Morton  
W.A. Morton, Agent



STATE OF CALIFORNIA  
DEPARTMENT OF NATURAL RESOURCES  
DIVISION OF OIL AND GAS

Report on Proposed Operations

No. P 1-44418

Los Angeles 15, Calif. January 20, 1948

Mr. Warren A. Morton

Balboa, Calif.

Agent for MORTON AND SONS

DEAR SIR:

Your supplementary proposal to drill Well No. "El Toro Co." 14-1, Section 14, T. 6 S., R. 8 W., S.B. B. & M., (El Toro Area) ~~xxxx~~ Orange County, dated Jan. 15, 1948, received Jan. 16, 1948, has been examined in conjunction with records filed in this office.

Present conditions as shown by the records and the proposal are as follows:

**RECORDS:** The condition of the well is as stated in the notice.

**THE NOTICE STATES:**

"The present condition of the well is as follows:

1. Complete casing record.
  - a) 17-1/2" Rotary hole drilled to 507'.
  - b) 13 3/8", 48# H 40 seamless casing cemented @ 502' with 310 sax of con. cement on 1 November 1947.
  - c) 11" Rotary hole drilled to 5791'.
  - d) 7", 23#, J-55 smlss csg cemented @ 5791 w 500 sax of con. cement on 23 Dec. 1947.
  - e) Drill 6 1/8" hole to present T. D. of 6528'.
2. Last produced Never Produced."

**PROPOSAL:**

"The proposed work is as follows:

- a) Fill hole with extra heavy mud.
- b) Weld cap on casing head with outlet to keep hole full of mud.
- c) Suspend operations pending geologic decisions by the operator.
- d) Notify Division of Oil and Gas when a decision is reached to either deepen or abandon hole."

**DECISION:**

THE PROPOSAL IS APPROVED.

SHR:OH

cc- Morton & Sons  
Long Beach

*9-13-48 - Job Morton & Sons, phone.*  
*Will send in notice to abnd. -*  
*5812-5771*  
 1) pg. w/cem. 522'-480'  
 2) Recover all 7" possible  
 3) Place 20' pg. on stub at 7"  
 4) pg. w/cem. 522'-480'  
 5) Weld steel plate on 1336  
 at snit. (Dio. to witness  
 plugs at 5771' & 480'  
 W.B. OK. SHR.

*has been filed*

\_\_\_\_\_  
 \_\_\_\_\_  
 \_\_\_\_\_  
 \_\_\_\_\_

R. D. BUSH  
State Oil and Gas Supervisor

By E. H. Mussen Deputy

DIVISION OF OIL AND GAS

DIVISION OF OIL AND GAS  
RECEIVED  
DEC 22 1947

LOS ANGELES, CALIFORNIA

Supplementary Notice

Long Beach Calif. Dec. 22 19 47

DIVISION OF OIL AND GAS

Los Angeles Calif.

Our notice to you dated 24 October, 19 47, stating our intention to

drill well No. El Toro Co. 14-1  
(Drill, deepen, redrill, abandon)

Sec. 14, T. 6S, R. 8W, S.B. B. & M. xx Field,

ORANGE County, must be amended on account of changed or recently discovered conditions.

The new conditions are as follows:

1. A 17 1/2" rotary hole was drilled from surface to 507'.
2. 13-3/8" 48# casing was cemented at 502' with 310 sks. of cement.
3. An 11" rotary hole was drilled from 507' to 5774'.

We now propose

1. To run in and cement a 7" 23# string of protective casing to 5774'.
2. Deepen hole with 6-1/8" rotary tools.

MAP	MAP BOOK	CARDS	BOND	FORMS	
				114	121
			126133	end	end

*Supplement*

Morton and Sons  
(Name of Operator)  
By C. W. Morton



STATE OF CALIFORNIA  
DEPARTMENT OF NATURAL RESOURCES

DIVISION OF OIL AND GAS

Report on Proposed Operations

No. P 1-45838

Los Angeles 15, Calif. November 4, 19 48

Mr. John W. Jordan

Huntington Beach, Calif.

Agent for MORTON AND SONS

DEAR SIR:

Your proposal to ABANDON Well No. "El Toro Co." 14-1, Section 14, T. 6 S., R. 8 W., S.B. B. & M., (El Toro Area) FIRM, Orange County, dated Nov. 1, 19 48, received Nov. 3, 19 48, has been examined in conjunction with records filed in this office.

Present conditions as shown by the records and the proposal are as follows:

RECORDS IN ADDITION TO, OR AT VARIANCE WITH, THOSE SHOWN IN THE NOTICE:

No oil or gas zones were encountered.

THE NOTICE STATES:

"The present condition of the well is as follows:

1. Complete casing record.
  - a) 17 1/2" rotary hole drilled to 507'.
  - b) 13 3/8" casing, 48#, seamless H 40, cemented @ 502' with 310 sax of construction cement on 1 November 1947.
  - c) 11" rotary hole drilled to 5791'.
  - d) 7", 23#, J 55 smlss casg cemented at 5791 w 500 sax of construction cement on 23 Dec. 1947.
  - e) Drill 6 1/8" hole to present T.D. of 6526'.
  - f) Run ELD to bottom. THERE WAS NO EVIDENCE OF SALINE WATERS AT ANY DEPTH IN THIS WELL OR IN MORTON and SONS IRVINE 15-1 DRILLED ONE MILE TO THE WEST.
  - g) Fill hole with heavy mud, weld cap at surface, suspend operations. 14 Jan '47
2. Last produced Never produced."

PROPOSAL:

"The proposed work is as follows:

- a) Shoot and pull 7" casing from as deep as possible. placing a 20' plug on stub of 7" before pulling casing more than 30'.
- b) Place a cement plug 20' in and 20' out of shoe of 13 3/8" @ 502'.
- c) Weld cap on 13 3/8" @ surface.
- d) DOG to witness location and hardness of plug @ 480' and at stub of 7", wherever that may be."

DECISION:

THE PROPOSAL IS APPROVED.

SHR:OH *ma/*

cc- Morton & Sons  
Long Beach

R. D. BUSH

State Oil and Gas Supervisor

By *E. H. Messer* Deputy



1015 West Olympic Boulevard  
Los Angeles 15, California  
January 7, 1949

Mr. John W. Jordan,  
221 - 7th Street,  
Huntington Beach, California.

Agent for Morton and Sons

Dear Sir:

Your report of abandonment of well No. "El Toro Co." 14-1, Sec. 14, T. 6 N., R. 8 W., S. E. 1/4, Orange County, dated December 6, 1948, and submitted to this division on our form No. 102, has been examined in conjunction with records filed in this office.

A review of the reports and records shows that the requirements of this division, which are based on all information filed with it, have been fulfilled.

Yours truly,

R. D. BUSH  
State Oil and Gas Supervisor

By G. W. Mussler  
Deputy Supervisor

cc - Mr. R. D. Bush  
Morton and Sons  
Long Beach

es

MAP	MAP BOOK	CARDS	BOND	FORMS	
				114	121
Topo 73 JLW	JLW		152		

STATE OF CALIFORNIA  
DEPARTMENT OF NATURAL RESOURCES

DIVISION OF OIL AND GAS

Special Report on Operations Witnessed

No. T 1-48990

Mr. John W. Jordan Los Angeles 15, Calif. November 18, 19 48  
Huntington Beach, Calif.  
Agent for MORTON AND SONS

DEAR SIR:

Operations at your well No. "El Toro Co." 14-1 Sec. 14, T. 6 S., R. 8 W., S. B. B. & M.,  
(El Toro Area) ~~is~~ in Orange County, were witnessed by  
J. M. Carls, Inspector, representative of the supervisor,  
on November 9, 19 48. There was also present V. Tull, Driller;  
R. Dunning, Helper.

Casing Record 13-3/8" cem. 502'; 7" cem. 5791', shot Junk None  
at 2024', 1712', 1411', and pulled from 1411'; T. D.  
6526', plugged with cement 1411'-1391' and 522'-481'.

The operations were performed for the purpose of testing the location and hardness of a cement  
plug placed from 522' to 481' in the process of abandonment.

~~The inspector visited the well on November 8, 1948, and Mr. Tull reported that a wooden plug was driven to 522'. The inspector noted that plugging operations were started by dumping cement in the hole at 522'.~~  
INSPECTOR CARLS VISITED THE WELL AT 4:00 P. M., NOVEMBER 8, 1948, AND MR. TULL REPORTED THAT a wooden plug was driven to 522'. THE INSPECTOR NOTED THAT plugging operations were started by dumping cement in the hole at 522'.

THE INSPECTOR ARRIVED AT THE WELL AT 10:00 A. M., AND MR. TULL REPORTED THAT on November 8, 1948, 32 sacks of cement was dumped in the hole at 522'.

THE INSPECTOR NOTED THAT the bailer could not be spudded below 481' and brought up a sample of set cement.

The test was completed at 11:00 a.m.

THE LOCATION AND HARDNESS OF THE CEMENT PLUG AT 481' ARE APPROVED.

JMC:OH

*ma/ary*  
cc- Morton & Sons  
Long Beach

R. D. BUSH  
State Oil and Gas Supervisor

By E. H. Messer Deputy



**SCAQMD RECORDS**



## Facility Information Detail (FIND)

[Search Again](#)

Facility ID	Facility Name	Facility Address	RECLAIM	Title V	Facility Status
<a href="#">129607</a>	IRVINE RANCH WATER DISTRICT	21082 WISTERIA ST , LAKE FOREST, CA 92630			ACTIVE
<a href="#">69408</a>	LOS ALISOS WATER DIST	21082 WISTERIA ST , LAKE FOREST, CA 92630			

[First](#)

[Prev](#)

Page 1 of 1 (2 records)

[Next](#)

[Last](#)

Page

1

[Export To Excel](#)

[Inside AQMD](#) | [Community](#) | [Business](#) | [Technology](#) | [Health & Education](#)  
[Home](#) | [Employment](#) | [Contact Us](#) | [Disclaimer](#) | [Website Navigation Tips](#)  
[Question or Need Info?](#) - [Report Website Problem](#)  
21865 Copley Dr, Diamond Bar, CA 91765 - (909) 396-2000 - (800) CUT-SMOG (288-7664)

## Facility Information Detail (FIND)

[Search Again](#) | [Search Results](#) | [Facility Details](#) | [Equipment List](#) | [Compliance](#) | [Emissions](#) | [Hearing Board](#)

### Facility Details

**Facility ID** 129607  
**Company Name** IRVINE RANCH WATER DISTRICT  
**Address** 21082 WISTERIA ST  
LAKE FOREST, CA 92630

[View Area Map](#)

**Status** ACTIVE

**Are there any back fees due?**

No.

SIC Code	Description
4941	WATER SUPPLY

## Facility Information Detail (FIND)

[Search Again](#) | 
 [Search Results](#) | 
 [Facility Details](#) | 
 [Equipment List](#) | 
 [Compliance](#) | 
 [Emissions](#) | 
 [Hearing Board](#)

### Equipment List

**Facility ID**            129607  
**Company Name**        IRVINE RANCH WATER DISTRICT  
**Address**                21082 WISTERIA ST  
                                  LAKE FOREST, CA 92630

Appl_Nbr	Permit_Nbr	Issued_Date	Permit_Status	Eq_Type	Equip_Description	Appl_Date	Appl_Status
390855	F44529	9/27/2001	ACTIVE	Basic	I C E (50-500 HP) EM ELEC GEN-DIESEL	9/6/2001	PERMIT TO OPERATE GRANTED
390847	F44530	9/27/2001	ACTIVE	Basic	I C E (50-500 HP) EM ELEC GEN-NG & LPG	9/6/2001	PERMIT TO OPERATE GRANTED

[First](#)
[Prev](#)

Page 1 of 1 (2 records)

[Next](#)
[Last](#)

Page

1

[Export To Excel](#)

[Inside AQMD](#) | 
 [Community](#) | 
 [Business](#) | 
 [Technology](#) | 
 [Health & Education](#)

[Home](#) | 
 [Employment](#) | 
 [Contact Us](#) | 
 [Disclaimer](#) | 
 [Website Navigation Tips](#)

[Question or Need Info?](#) - 
 [Report Website Problem](#)

21865 Copley Dr, Diamond Bar, CA 91765 - (909) 396-2000 - (800) CUT-SMOG (288-7664)



## Facility Information Detail (FIND)

[Search Again](#) | [Search Results](#) | [Facility Details](#) | [Equipment List](#) | [Compliance](#) | [Emissions](#) | [Hearing Board](#)

### Application Details

Application/Tracking Number      390855

### Facility Information

Business Name      IRVINE RANCH WATER DISTRICT

Facility ID      129607      Facility Status      ACTIVE

### Application Information

Application Type      Change of Ownership      Application Received      9/6/2001

Application Status      PERMIT TO OPERATE GRANTED      Application Deemed Complete      9/20/2001

Equipment Desc      I C E (50-500 HP) EM ELEC GEN-DIESEL

Permit Number      F44529      Permit Status      ACTIVE

[View Permit Image](#)

### Engineer Information

Engineer Assigned      LISA KREBS

Engineer Phone      (909) 396-2384      Team Assigned      N

## Facility Information Detail (FIND)

[Search Again](#) | [Search Results](#) | [Facility Details](#) | [Equipment List](#) | [Compliance](#) | [Emissions](#) | [Hearing Board](#)

### Application Details

Application/Tracking Number      390847

### Facility Information

Business Name      IRVINE RANCH WATER DISTRICT

Facility ID      129607      Facility Status      ACTIVE

### Application Information

Application Type      Change of Ownership      Application Received      9/6/2001

Application Status      PERMIT TO OPERATE GRANTED      Application Deemed Complete      9/20/2001

Equipment Desc      I C E (50-500 HP) EM ELEC GEN-NG & LPG

Permit Number      F44530      Permit Status      ACTIVE

[View Permit Image](#)

### Engineer Information

Engineer Assigned      LISA KREBS

Engineer Phone      (909) 396-2384      Team Assigned      N



## Facility Information Detail (FIND)

[Search Again](#) | [Search Results](#) | [Facility Details](#) | [Equipment List](#) | [Compliance](#) | [Emissions](#) | [Hearing Board](#)

### Facility Details

**Facility ID** 69408  
**Company Name** LOS ALISOS WATER DIST  
**Address** 21082 WISTERIA ST  
LAKE FOREST, CA 92630

[View Area Map](#)

**Status** SOLD

SIC Code	Description
4941	WATER SUPPLY

## Facility Information Detail (FIND)

[Search Again](#) | 
 [Search Results](#) | 
 [Facility Details](#) | 
 [Equipment List](#) | 
 [Compliance](#) | 
 [Emissions](#) | 
 [Hearing Board](#)

### Equipment List

**Facility ID**            69408  
**Company Name**        LOS ALISOS WATER DIST  
**Address**                21082 WISTERIA ST  
                               LAKE FOREST, CA 92630

Appl_Nbr	Permit_Nbr	Issued_Date	Permit_Status	Eq_Type	Equip_Description	Appl_Date	Appl_Status
<a href="#">351703</a>	F44132	9/15/2001	INACTIVE	Basic	I C E (50-500 HP) EM ELEC GEN-DIESEL	2/23/1999	PERMIT TO OPERATE GRANTED
<a href="#">315930</a>	F6517	4/16/1997	INACTIVE	Basic	I C E (50-500 HP) EM ELEC GEN-NG & LPG	5/1/1996	PERMIT TO OPERATE GRANTED
<a href="#">191508</a>	D10451	10/6/1989	INACTIVE	Basic	SEWAGE TREATMENT (>5 MG/D) AEROBIC	4/14/1989	PERMIT TO OPERATE GRANTED
<a href="#">191508</a>	D10451	10/6/1989	INACTIVE	Control	SCRUBBER, OTHER VENTING S.S.	4/14/1989	PERMIT TO OPERATE GRANTED

[First](#) | 
 [Prev](#) | 
 Page 1 of 1 (4 records) | 
 [Next](#) | 
 [Last](#) | 
 Page  | 
 [Export To Excel](#)



## Facility Information Detail (FIND)

[Search Again](#) | [Search Results](#) | [Facility Details](#) | [Equipment List](#) | [Compliance](#) | [Emissions](#) | [Hearing Board](#)

### Application Details

Application/Tracking Number      351703

### Facility Information

Business Name      LOS ALISOS WATER DIST

Facility ID      69408      Facility Status      SOLD

### Application Information

Application Type      Permit to Operate without prior Permit to Construct      Application Received      2/23/1999

Application Status      PERMIT TO OPERATE GRANTED      Application Deemed Complete      1/12/1999

Equipment Desc      I C E (50-500 HP) EM ELEC GEN-DIESEL

Permit Number      F44132      Permit Status      INACTIVE

[View Permit Image](#)

### Engineer Information

Engineer Assigned      ANURAG SAHNI

Engineer Phone      ( ) -      Team Assigned      W1

## Facility Information Detail (FIND)

[Search Again](#) | [Search Results](#) | [Facility Details](#) | [Equipment List](#) | [Compliance](#) | [Emissions](#) | [Hearing Board](#)

### Application Details

Application/Tracking Number      315930

### Facility Information

Business Name      LOS ALISOS WATER DIST

Facility ID      69408      Facility Status      SOLD

### Application Information

Application Type	Permit to Operate without prior Permit to Construct	Application Received	5/1/1996
Application Status	PERMIT TO OPERATE GRANTED	Application Deemed Complete	4/19/1996

Equipment Desc      I C E (50-500 HP) EM ELEC GEN-NG & LPG

Permit Number      F6517      Permit Status      INACTIVE

### Engineer Information

Engineer Assigned

Engineer Phone      Team Assigned      G1

## Facility Information Detail (FIND)

[Search Again](#) | [Search Results](#) | [Facility Details](#) | [Equipment List](#) | [Compliance](#) | [Emissions](#) | [Hearing Board](#)

### Application Details

Application/Tracking Number      191508

### Facility Information

Business Name      LOS ALISOS WATER DIST

Facility ID      69408      Facility Status      SOLD

### Application Information

Application Type      Permit to Operate      Application Received      4/14/1989

Application Status      PERMIT TO OPERATE GRANTED      Application Deemed Complete

Equipment Desc      SEWAGE TREATMENT (>5 MG/D) AEROBIC; SCRUBBER, OTHER VENTING S.S.

Permit Number      D10451      Permit Status      INACTIVE

[View Permit Image](#)

### Engineer Information

Engineer Assigned

Engineer Phone      Team Assigned      03



## Facility Information Detail (FIND)

[Search Again](#) | [Search Results](#) | [Facility Details](#) | [Equipment List](#) | [Compliance](#) | [Emissions](#) | [Hearing Board](#)

### Application Details

Application/Tracking Number      191508

### Facility Information

Business Name      LOS ALISOS WATER DIST

Facility ID      69408      Facility Status      SOLD

### Application Information

Application Type      Permit to Operate      Application Received      4/14/1989

Application Status      PERMIT TO OPERATE GRANTED      Application Deemed Complete

Equipment Desc      SEWAGE TREATMENT (>5 MG/D) AEROBIC; SCRUBBER, OTHER VENTING S.S.

Permit Number      D10451      Permit Status      INACTIVE

[View Permit Image](#)

### Engineer Information

Engineer Assigned

Engineer Phone      Team Assigned      03



**DTSC RECORDS**





## Department of Toxic Substances Control



Linda S. Adams  
Secretary for  
Environmental Protection

Maureen F. Gorsen, Director  
5796 Corporate Avenue  
Cypress, California 90630



Arnold Schwarzenegger  
Governor

April 8, 2008

Ms. Meredith Church, PG  
Project Geologist  
Leighton and Associates, Inc.  
17781 Cowan, Suite 140  
Irvine, California 92614

104-132-36, -64, -65, -83, & -84; 20996 MARIN AND 21082 & 21084 WISTERIA,  
LAKE FOREST, CALIFORNIA 92630  
PR#404040811

Dear Ms. Church:

The Department of Toxic Substances Control has received your request to review records under the Public Records Act.

After a thorough review of our files we have found that no such records exist at this office pertaining to the sites/facilities referenced above.

We would like to inform you about Envirostor, a database that provides information and documents on over 5,000 DTSC cleanup sites. EnviroStor can be accessed at: <http://www.envirostor.dtsc.ca.gov/public>. Also, a computer is available at each DTSC Regional File Room for use by community members to view EnviroStor.

If you have any questions or would like further information regarding your request, please contact our Regional Records Coordinators at (714) 484-5337.

Sincerely,

Julie Johnson  
Regional Records Coordinator

brm





## Department of Toxic Substances Control



Linda S. Adams  
Secretary for  
Environmental Protection

Maureen F. Gorsen, Director  
9211 Oakdale Avenue  
Chatsworth, CA 91311



Arnold Schwarzenegger  
Governor

June 18, 2008

Ms. Meredith Church, PG  
Project Geologist  
Leighton & Associates, Inc.  
17781 Cowan, Suite 140  
Irvine, Ca 92614

VARIOUS SITES  
PR30617084

Dear Ms. Church:

We have received your Public Records Act Request for records from the Department of Toxic Substances Control.

After a thorough review of our files we have found that no such records exist at this office pertaining to the sites/facilities referenced below.

- APN 104-132-36, -65, -65, -83, & -84, Lake Forest, Ca 92630
- 20996 Marin, Lake Forest, Ca 92630
- 21082 & 21804 Wisteria, Lake Forest, Ca 92630

We would like to inform you about Envirostor, a database that provides information and documents on over 5,000 DTSC cleanup sites. EnviroStor can be accessed at: <http://www.envirostor.dtsc.ca.gov/public>. Also, a computer is available in the Central Files of each DTSC Regional Office for use by community members to view EnviroStor.

If you have any questions, would like further information regarding your request or would like an appointment to visit Glendale's Central Files, please contact me at (818) 717-6521.

Sincerely,

*Vivien Tutaan*  
Vivien Tutaan/bh  
Regional Records Coordinator



**OCHCA RECORDS**





COUNTY OF ORANGE  
HEALTH CARE AGENCY

PUBLIC HEALTH SERVICES  
ENVIRONMENTAL HEALTH

*Excellence  
Integrity  
Service*

JULIETTE A. POULSON, RN, MN  
DIRECTOR

DAVID M. SOULELES, MPH  
DEPUTY AGENCY DIRECTOR

RICHARD SANCHEZ, REHS, MPH  
DIRECTOR  
ENVIRONMENTAL HEALTH

MAILING ADDRESS:  
1241 E. DYER ROAD  
SUITE 120  
SANTA ANA, CA 92705-5611

TELEPHONE: (714) 433-6000  
FAX: (714) 754-1732  
E-MAIL: ehealth@ochca.com

4/14/2008

INVOICE

LEIGHTON ASSOCIATES  
MEREDITH CHURCH  
17781 COWAN  
IRVINE CA 92614-

**FAXED**  
949-253-9750

RE: PUBLIC RECORDS REQUEST #: 13292  
20996 MARIN, L.F/21082 &21084 WISTERIA L.F

<u>SUMMARY OF CHARGES</u>		<u>CHARGES</u>	<u>CREDITS</u>
			\$0.00
11	COPIES MADE @ 0.15 EACH	\$1.65	
	Mailing/Other Charges	\$1.48	
	TOTAL Charges	\$3.13	
	<b>BALANCE DUE</b>		<b>\$3.13</b>

Please remit to: Environmental Health Records Unit  
1241 E. Dyer Road, Suite 120  
Santa Ana, CA 92705

If you have any questions, please call this office at (714) 433-6022.

\*\*\*RECORDS WILL BE MAILED UPON RECEIPT OF PAYMENT\*\*\*

Federal TAX ID: 95-6000-928W



**COUNTY OF ORANGE  
HEALTH CARE AGENCY**

**PUBLIC HEALTH SERVICES  
ENVIRONMENTAL HEALTH**

*Excellence  
Integrity  
Service*

**JULIETTE A. POULSON, RN, MN  
DIRECTOR**

**DAVID M. SOULELES, MPH  
DEPUTY AGENCY DIRECTOR**

**RICHARD SANCHEZ, REHS, MPH  
DIRECTOR  
ENVIRONMENTAL HEALTH**

MAILING ADDRESS:  
1241 E. DYER ROAD  
SUITE 120  
SANTA ANA, CA 92705-5611

TELEPHONE (714) 433-6000  
FAX (714) 754-1732  
E-MAIL: ehealth@ochca.com

4/10/2008

LEIGHTON  
MEREDITH CHURCH  
17781 COWAN  
IRVINE CA 92614-

**RE: EHD REQ #: 13292**  
20996 MARIN, L.F/21082 &21084 WISTERIA L.F

Attached, please find the information that you have requested.

The information was prepared in the ordinary course of the business concerned at or near the time of the act, condition, or event, which they depict.

If you have any question, please call this office at (714) 433-6022.

Environmental Health Records Unit

Attachment(s):  
11 Pages

Orange County TAX ID: 95-6000-928W



13292



COUNTY OF ORANGE  
HEALTH CARE AGENCY

MAILING ADDRESS:  
1241 E. DYER ROAD STE 120  
SANTA ANA, CA 92705  
TELEPHONE: (714) 433-8000  
FAX: (714) 433-6424

ENVIRONMENTAL HEALTH

<http://www.ocalthinfo.com/regulatory/envIRON.htm>

REQUEST FOR ENVIRONMENTAL HEALTH RECORDS

The undersigned hereby requests a copy of the records prepared and maintained by the Health Care Agency in the ordinary course of business, at or near the time of the act, condition, or event which they depict.

The records requested are maintained under the Public Records Act Government Code § 6250 – 6276.48. Some information held in the documents may be exempt from release pursuant to the Public Records Act.

The undersigned understands that the Health Care Agency will charge \$0.15 per page copied. In the case of a request for a large number of copies, the Health Care Agency may provide the requestor an estimate of copy costs prior to making said copies. If any request is to be canceled, this office must be notified at the above number within ten (10) days of receipt of request, otherwise cost incurred will be charged to the undersigned.

In order to assist you, please describe the reason for your request:

Phase I ESA

Please list addresses here (no more than 10 addresses per request):

20996 Marin, Lake Forest 92630

21082 and 21084 Wisteria, Lake Forest 92630

and Baker Filtration Plant, El Toro, 92630 (if you can search by Facility Name)

Check here if you would like a review only or to review before copies are made

Meredith Church  
SIGNATURE of Requester

Meredith Church, Leighton  
PRINT Name of Requester (and Company Name - if applicable)

17781 Cowan  
PRINT Street Address

949-681-4208  
Area Code and Phone Number

Irvine, CA 92614  
PRINT City, State and Zip Code

4/4/08  
Date

9  
[Handwritten signature]



**COUNTY OF ORANGE  
HEALTH CARE AGENCY**

MAILING ADDRESS:  
1241 E. DYER ROAD STE 120  
SANTA ANA, CA 92705

TELEPHONE: (714) 433-6000  
FAX: (714) 433-6424

**ENVIRONMENTAL HEALTH**

<http://www.ochealthinfo.com/regulatory/envIRON.htm>

**ENVIRONMENTAL HEALTH HAZARDOUS WASTE / OTHER PROGRAM  
INFORMATION CHECKLIST**

Please check only the records you need. This will enable us to search only the actual files that pertain to your request, cutting down time spent on searching for records that you may not want.

<b>Site Specific Information</b>	
<input checked="" type="checkbox"/>	Above Ground Petroleum Storage Tank File
<input checked="" type="checkbox"/>	California Accidental Release Prevention Program File
<input checked="" type="checkbox"/>	Certified Unified Program Agency (CUPA) records
<input checked="" type="checkbox"/>	City of Brea Hazardous Materials Business Plan File
<input checked="" type="checkbox"/>	Complaints regarding Hazardous Waste or Underground Storage Tank Facility
<input checked="" type="checkbox"/>	Hazardous Waste Generator Facility File
<input checked="" type="checkbox"/>	Hazardous Waste Industrial Cleanup Site File
<input checked="" type="checkbox"/>	Hazardous Waste Spill Response Log (Emergency Incidents Log)
<input checked="" type="checkbox"/>	Leaking Underground Storage Tank Cleanup Site File
<input checked="" type="checkbox"/>	Proposition 65 Notification
<input checked="" type="checkbox"/>	Solid Waste Facility File (large files – need to be specific)
<input checked="" type="checkbox"/>	Spill Prevention, Control and Countermeasure (SPCC) File
<input checked="" type="checkbox"/>	Tiered Permit Facility File
<input checked="" type="checkbox"/>	Underground Storage Tank File
<input checked="" type="checkbox"/>	Water Quality Information

<b>Information Lists *</b>	
<input type="checkbox"/>	<u>List of all Hazardous Waste Generator Facilities in Orange County (HWFACILITIES.SRW)</u>
<input type="checkbox"/>	<u>List of all Industrial Cleanup Sites in Orange County (IC PROGRAM CASES BY CITY.SRW)</u>
<input type="checkbox"/>	<u>List of all Underground Storage Tank Cleanup Sites in Orange County</u>
<input type="checkbox"/>	<u>List of all Underground Storage Tank Facilities in Orange County (USTFACILITIES.SRW)</u>

Other information: \_\_\_\_\_

\*Note: These lists are also available on the Environmental Health website at [www.ochealthinfo.com/regulatory/downloads/reports.htm](http://www.ochealthinfo.com/regulatory/downloads/reports.htm).

A list of Solid Waste landfills (which includes closed landfills) can be obtained through the California website:

[www.clwmb.ca.gov/SWIS/](http://www.clwmb.ca.gov/SWIS/)



CPA - PROGRAM RECORD REQUEST

Inspector: J. Strozier

Date: 12/19/02

SUPV. INITIALS: \_\_\_\_\_

UNDERGROUND STORAGE TANK

INSTALL  REMOVAL

Facility DBA Baker Filtration Facility FA# 0024492  
 Site Address 21082 Westerra # SR0103229  
 City Lake Forest Zip 92630 PR# 0024424

Data Entry Staff Only Program (Level) Status  
 (01) Active/Billable  (02) Inactive/non-Billable  (03) Temp Inactive/non-billable

Tank Status (UST Level) General (tab)	INSTALL	REMOVAL
Status (Tank) TA # <u>600 Gallon Wastewater</u>	<input type="checkbox"/> (01) Active/Billable	<input checked="" type="checkbox"/> (02) Inactive/non-Billable
Status (Tank) TA #	<input type="checkbox"/> (01) Active/Billable	<input type="checkbox"/> (02) Inactive/non-Billable
Status (Tank) TA #	<input type="checkbox"/> (01) Active/Billable	<input type="checkbox"/> (02) Inactive/non-Billable
Status (Tank) TA # <u>ENTERED DEC 31 2002</u>	<input type="checkbox"/> (01) Active/Billable	<input type="checkbox"/> (02) Inactive/non-Billable
Status (Tank) TA #	<input type="checkbox"/> (01) Active/Billable	<input type="checkbox"/> (02) Inactive/non-Billable

SERVICE REQUEST (Plan Check - Underground Storage Tank)

LINK SR # \_\_\_\_\_ - to - FA # \_\_\_\_\_

Facility DBA \_\_\_\_\_  
 Site Address \_\_\_\_\_  
 Plan Check (tab) Plan Status  (C) Complete  
 Comments (tab) Date Service Completed \_\_\_\_\_

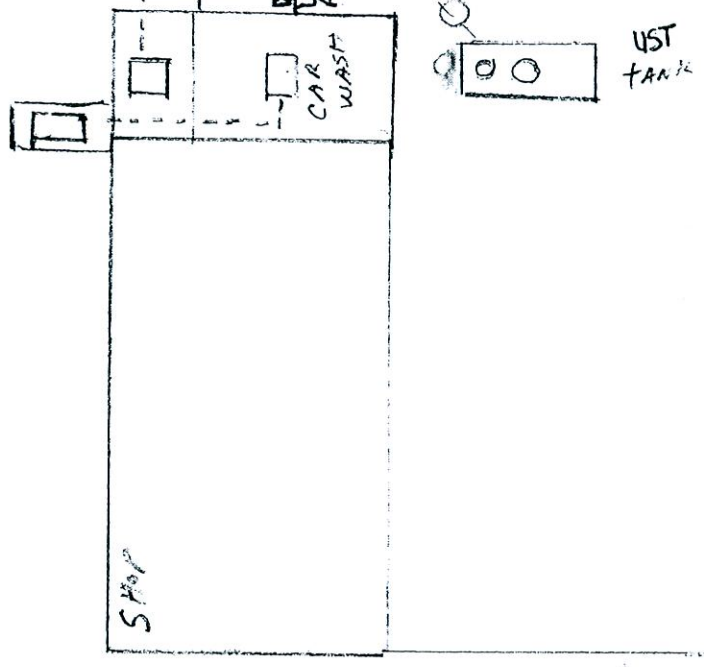
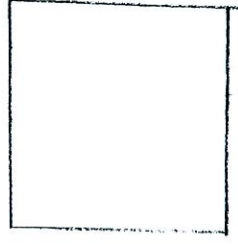
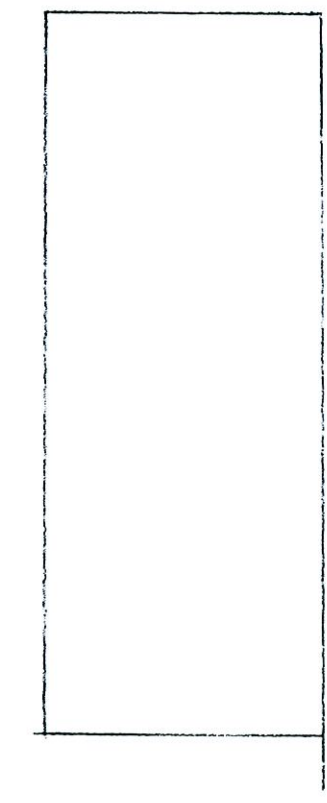
COMPLAINT

CO# \_\_\_\_\_ Site Address: \_\_\_\_\_  
 Contact (tab) Status  (05) Closed

TIERED PERMIT

Unit Type	Unit ID	Unit Name	Add	Close

Data Entry Only		
Program Level Status check all TP Units		
<input type="checkbox"/> 01 Billable	<input type="checkbox"/> 04 non-bill	<input type="checkbox"/> 02 Closed
<input type="checkbox"/> 01 Billable	<input type="checkbox"/> 04 non-bill	<input type="checkbox"/> 02 Closed
<input type="checkbox"/> 01 Billable	<input type="checkbox"/> 04 non-bill	<input type="checkbox"/> 02 Closed
<input type="checkbox"/> 01 Billable	<input type="checkbox"/> 04 non-bill	<input type="checkbox"/> 02 Closed



Baker Facility UST Plot Diagram  
21082 Wisteria, Lake Forest, Ca.



CUPA - PROGRAM RECORD REQUEST

Inspector: J. Strain

Date: 3/27/03

SUPV. INITIALS: \_\_\_\_\_

UNDERGROUND STORAGE TANK

<input type="checkbox"/> INSTALL		<input checked="" type="checkbox"/> REMOVAL	
Facility DBA	<u>Baker Filtration Facility</u>		FA #
Site Address	<u>21082 Wisteria</u>		SR# <u>0103229</u>
City	<u>Lake Forest</u>	Zip	<u>92630</u>
Data Entry Staff Only Program (Level) Status	<input type="checkbox"/> (01) Active/Billable	<input type="checkbox"/> (02) Inactive/non-Billable	<input type="checkbox"/> (03) Temp Inactive/non-billable
Tank Status (UST Level) General (tab)	INSTALL	REMOVAL	
Status (Tank) TA #	<input type="checkbox"/> (01) Active/Billable	<input type="checkbox"/> (02) Inactive/non-Billable	
Status (Tank) TA #	<input type="checkbox"/> (01) Active/Billable	<input type="checkbox"/> (02) Inactive/non-Billable	
Status (Tank) TA #	<input type="checkbox"/> (01) Active/Billable	<input type="checkbox"/> (02) Inactive/non-Billable	
Status (Tank) TA #	<input type="checkbox"/> (01) Active/Billable	<input type="checkbox"/> (02) Inactive/non-Billable	

SERVICE REQUEST (Plan Check - Underground Storage Tank)

<input type="checkbox"/> LINK	SR #	- to -	FA # <u>0024492</u>
Facility DBA			
Site Address			
Plan Check (tab)	Plan Status	<input checked="" type="checkbox"/> (C) Complete <u>Removal Complete</u>	
Comments (tab)	Date Service Completed	<u>Sent completion letter 3/27/03</u>	

ENTERED MAR 27 2003  
COMPLAINT

CO#	Site Address:
Contact (tab)	Status <input checked="" type="checkbox"/> (05) Closed

TIERED PERMIT			Data Entry Only	
Unit Type	Unit ID	Unit Name	Add	Close
			<input type="checkbox"/> 01 Billable	<input type="checkbox"/> 04 non-bill <input type="checkbox"/> 02 Closed
			<input type="checkbox"/> 01 Billable	<input type="checkbox"/> 04 non-bill <input type="checkbox"/> 02 Closed
			<input type="checkbox"/> 01 Billable	<input type="checkbox"/> 04 non-bill <input type="checkbox"/> 02 Closed
			<input type="checkbox"/> 01 Billable	<input type="checkbox"/> 04 non-bill <input type="checkbox"/> 02 Closed



COUNTY OF ORANGE  
HEALTH CARE AGENCY

REGULATORY HEALTH SERVICES  
ENVIRONMENTAL HEALTH

JULIETTE A. POULSON, RN, MN  
DIRECTOR

MIKE SPURGEON  
DEPUTY AGENCY DIRECTOR  
REGULATORY HEALTH SERVICES

STEVEN K. WONG, REHS, MPH  
DIRECTOR  
ENVIRONMENTAL HEALTH

MAILING ADDRESS:  
2009 EAST EDINGER AVENUE  
SANTA ANA, CA 92705-4720

TELEPHONE: (714) 667-3600  
FAX: (714) 972-0749  
E-MAIL: [environhealth@hca.co.orange.ca.us](mailto:environhealth@hca.co.orange.ca.us)

*Excellence  
Integrity  
Service*

March 27, 2003

Dave Heaney  
Irvine Ranch Water District  
P. O. Box 57000  
Irvine, CA 92619-7000

Subject: Completion Of Tank Removal Project

Re: Baker Filtration Facility  
21082 Wisteria  
Lake Forest, CA  
Plan Check #SR0103229

Dear Mr. Heaney:

This is in response to your request for a confirmation of the completion of the waste water tank removal project. With the provision that the results for the soil samples obtained during the tank removal on December 19, 2002 and January 8, 2003 were accurate and representative of existing conditions, it is the position of this office that no significant soil contamination has occurred at the above noted facility location.

It should be pointed out that this letter does not relieve you of any responsibilities mandated under the California Health and Safety Code if additional or previously unidentified contamination is discovered at the subject site.

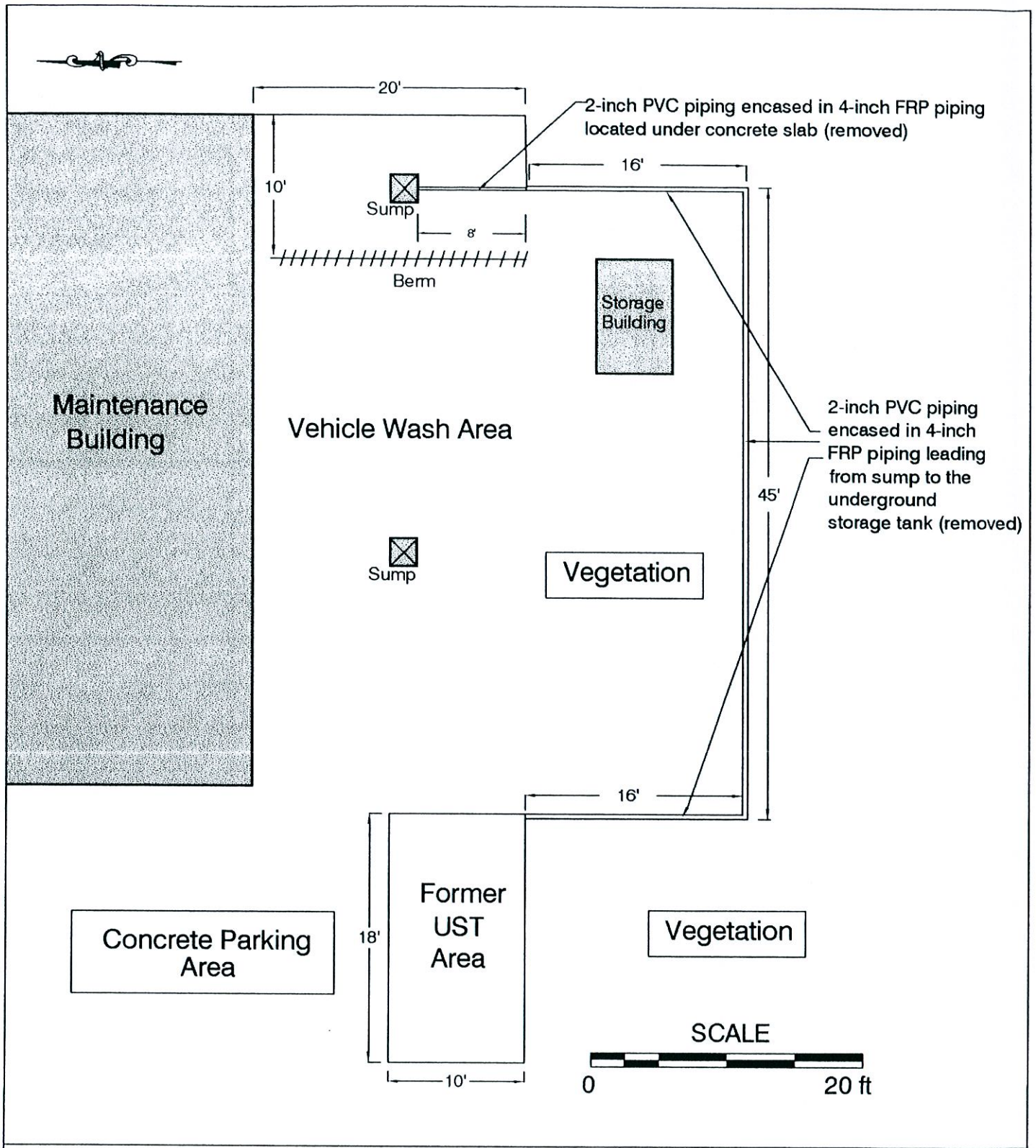
If you have any questions regarding this matter, please contact James Strozier at (714) 667-3711.

Sincerely,

Seth J. Daugherty  
Supervising Hazardous Waste Specialist  
Hazardous Materials Management Section  
Environmental Health

cc: Michael Voeltz, Innovative Construction Solutions, Inc.





<b>ICF</b> CONSULTING			TITLE FIGURE 2 SITE PLAN FORMER LOS ALISOS WATER DISTRICT BAKER FILTRATION PLANT (BAKER FACILITY) 21082 WISTERIA LAKE FOREST, CALIFORNIA	
APPROVALS	DATE	PREPARED FOR	SCALE	
DRAWN MSB	1/2003	BAKER	1 INCH = 10 FEET	
CHECKED BLM	1/2003	DATE	DWG. NO.	
QA/CONTROL		JAN. 2003	FIGURE2.DWG	
TECH REVIEW SAB	1/2003	SOURCE	SHEET	
PROJ MGR SAB	1/2003	ICF CONSULTING	1 OF 1	



IN CASE OF EMERGENCY OR SPILL, CALL THE NATIONAL RESPONSE CENTER 1-800-424-8802; WITHIN CALIFORNIA, CALL 1-800-852-7550  
 GENERATOR  
 TRANSPORTER  
 FACILITY

<b>UNIFORM HAZARDOUS WASTE MANIFEST</b>		1. Generator's US EPA ID No. <b>CA D 9 1 3 6 0 1 6 9 1 1 0 3 3 0 2 1</b>		Manifest Document No. <b>1 of 1</b>		2. Page 1		Information in the shaded areas is not required by Federal law. <b>EESB</b>							
3. Generator's Name and Mailing Address <b>IRVINE RANCH WATER DISTRICT 21082 WISTERIA LAKE FOREST CA 92630</b>						A. State Manifest Document Number <b>20803302</b>									
4. Generator's Phone (999) <b>453-5725</b>						B. State Generator's ID									
5. Transporter 1 Company Name <b>EVERGREEN ENVIRONMENTAL SERVICES</b>			6. US EPA ID Number <b>CA D 9 1 8 1 2 4 1 3 2 6 2</b>			C. State Transporter's ID [Reserved]									
7. Transporter 2 Company Name						D. Transporter's Phone <b>(510) 795-4400</b>									
8. US EPA ID Number						E. State Transporter's ID [Reserved]									
9. Designated Facility Name and Site Address <b>EVERGREEN ENVIRONMENTAL SERVICES 18804 SOUTH SAN PEDRO STREET CARSON, CA 90746</b>						10. US EPA ID Number <b>CA D 9 1 8 1 6 9 6 4 2 0</b>									
G. State Facility's ID <b>CA D 9 1 8 1 6 9 6 4 2 0</b>						H. Facility's Phone <b>(310) 769-0022</b>									
11. US DOT Description (including Proper Shipping Name, Hazard Class, and ID Number)						12. Containers		13. Total Quantity		14. Unit Wt/Vol		I. Waste Number			
						No.		Type						State	
a. <b>Oil/WATER Non-RCRA Hazardous waste, Liquid</b>						<b>0 0 1 1</b>		<b>T T</b>		<b>0 1 3 0 0</b>		<b>G</b>			
b.												State <b>221</b>			
c.												EPA/Other <b>None</b>			
d.												State			
												EPA/Other			
J. Additional Descriptions for Materials Listed Above						K. Handling Codes for Wastes Listed Above									
						a.		b.		c.		d.			
15. Special Handling Instructions and Additional Information <b>24 Hour Emergency Response Telephone No.: CHEMTREC 1-800-424-9300 DOT ERG 171 WEAR PROTECTIVE CLOTHING</b>						Invoice # <b>Sales Order # 94600583</b>									
16. GENERATOR'S CERTIFICATION: I hereby declare that the contents of this consignment are fully and accurately described above by proper shipping name and are classified, packed, marked, and labeled, and are in all respects in proper condition for transport by highway according to applicable international and national government regulations.  If I am a large quantity generator, I certify that I have a program in place to reduce the volume and toxicity of waste generated to the degree I have determined to be economically practicable and that I have selected the practicable method of treatment, storage, or disposal currently available to me which minimizes the present and future threat to human health and the environment; OR, if I am a small quantity generator, I have made a good faith effort to minimize my waste generation and select the best waste management method that is available to me and that I can afford.															
Printed/Typed Name <b>X MEN Dixon</b>						Signature <i>[Signature]</i>						Month Day Year <b>09/25/01</b>			
17. Transporter 1 Acknowledgement of Receipt of Materials						Printed/Typed Name <b>WILLIAM WAKISO</b>						Signature <i>[Signature]</i>		Month Day Year <b>09/25/01</b>	
18. Transporter 2 Acknowledgement of Receipt of Materials						Printed/Typed Name						Signature		Month Day Year	
19. Discrepancy Indication Space															
20. Facility Owner or Operator Certification of receipt of hazardous materials covered by this manifest except as noted in Item 19.															
Printed/Typed Name						Signature						Month Day Year			

DO NOT WRITE BELOW THIS LINE.





INSPECTION REPORT CONTINUATION PAGE  
 County of Orange, Health Care Agency, Environmental Health  
 2009 E. Edinger Ave., Santa Ana, CA 92705  
 (714) 667-3600

DBA/Name Baker (IRWD)

Address 21082 Wistonia, LF

Viol. Sub. Cat.	
	Received Certificate of Return to Compliance dated 10/10/01. Supporting documents were submitted, as well.
	Abate violations ( <sup>old</sup> 054), ( <sup>old</sup> 452), ( <sup>old</sup> 457) ⇒ ( <sup>new</sup> W90), ( <sup>new</sup> W31), ( <sup>new</sup> W30)
	NO violations remain outstanding at this time. Facility no longer generates hazardous waste. Documentation of waste hauling represents final removal of waste.
	Questions? Call me at 714/667-3783

Susan Berg  
 Specialist Name

11/16/01  
 Date



53096413  
 IN CASE OF EMERGENCY OR SPILL, CALL THE NATIONAL RESPONSE CENTER 1-800-424-8802; WITHIN CALIFORNIA, CALL 1-800-852-7550

<b>UNIFORM HAZARDOUS WASTE MANIFEST</b>		1. Generator's US EPA ID No. 040903601091		Manifest Document No. 000001		2. Page 1 of 1		Information in the shaded areas is not required by Federal law.					
3. Generator's Name and Mailing Address SOUTHERN RANCH WATER DISTRICT (BOKER PLANT) 21462 Wistaria Lake Forest, CA 92630 4. Generator's Phone (949) 453-8809						A. State Manifest Document Number 99696413							
5. Transporter 1 Company Name OCEAN BLUE ENVIRONMENTAL				6. US EPA ID Number 020903608258		B. State Generator's ID							
7. Transporter 2 Company Name						C. State Transporter's ID [Reserved.]							
9. Designated Facility Name and Site Address CROSBY & OVERTON 1630 W. 17th. STREET LONG BEACH, CA. 90813						D. Transporter's Phone (562) 624-4120							
10. US EPA ID Number 04020409019						E. State Transporter's ID [Reserved.]							
11. US DOT Description (including Proper Shipping Name, Hazard Class, and ID Number)						12. Containers		13. Total Quantity		14. Unit Wt/Vol		15. Waste Number	
a. NON RCRA HAZARDOUS WASTE, LIQUID						No. Type		Quantity		Wt/Vol		State EPA/Other	
b. NON - RCRA HAZARDOUS WASTE SOLID						0101 DM		010025 G				State EPA/Other 223	
c. NON - RCRA HAZARDOUS WASTE LIQUID						0101 DM		010095 P				State EPA/Other 223	
d.						0101 DF		010030 G				State EPA/Other	
J. Additional Descriptions for Materials Listed Above						K. Handling Codes for Wastes Listed Above							
11a. OILY WASTE WATER #16812						a.		b.					
11b. OILY SOIL & DEBRIS 12865						c.		d.					
11c. OILY WASTE WATER (POLY) 16812													
15. Special Handling Instructions and Additional Information REQUESTER: GIL OVALLE POB SITE ADDRESS: POB WEAR APPROPRIATE PROTECTIVE CLOTHING; EMERGENCY TELEPHONE# (562) 624-4120 (24HRS), CONTACT: ED LONG ERG# 171													
16. GENERATOR'S CERTIFICATION: I hereby declare that the contents of this consignment are fully and accurately described above by proper shipping name and are classified, packed, marked, and labeled, and are in all respects in proper condition for transport by highway according to applicable international and national government regulations.  If I am a large quantity generator, I certify that I have a program in place to reduce the volume and toxicity of waste generated to the degree I have determined to be economically practicable and that I have selected the practicable method of treatment, storage, or disposal currently available to me which minimizes the present and future threat to human health and the environment; OR, if I am a small quantity generator, I have made a good faith effort to minimize my waste generation and select the best waste management method that is available to me and that I can afford.													
17. Transporter 1 Acknowledgement of Receipt of Materials				18. Transporter 2 Acknowledgement of Receipt of Materials				19. Discrepancy Indication Space					
Printed/Typed Name GILBERT OVALLE				Signature <i>Gilbert Ovalle</i>				Month Day Year 10/10/01					
Printed/Typed Name EDWARD A LONG				Signature <i>Edward A. Long</i>				Month Day Year 10/10/01					
Printed/Typed Name				Signature				Month Day Year					
20. Facility Owner or Operator Certification of receipt of hazardous materials covered by this manifest except as noted in Item 19.													
Printed/Typed Name				Signature				Month Day Year					

DO NOT WRITE BELOW THIS LINE.



<b>UNIFORM HAZARDOUS WASTE MANIFEST (Continuation Sheet)</b>		21. Generator's US EPA ID No. DAD 983 601 691	Manifest Document No. 00001	22. Page 2 of 2	Information in the shaded areas is not required by Federal law.	
23. Generator's Name IRVINE (ANCHOR WATER DISTRICT) (BARCELONANT) 21083 WISCONSIA LAKE FOREST, CA. 92639 (714) 453-5800				L. State Manifest Document Number 99692119		
24. Transporter Company Name OCEAN PULP				25. US EPA ID Number DAD 983 628 258		M. State Generator's ID
26. Transporter Company Name				27. US EPA ID Number		N. State Transporter's ID
				O. Transporter's Phone 562 624 4120		P. State Transporter's ID
				Q. Transporter's Phone		
28. US DOT Description (Including Proper Shipping Name, Hazard Class, and ID Number)		29. Containers		30. Total Quantity	31. Unit W/Vol	R. Waste No.
a. <input type="checkbox"/> HM WASTE FLAMMABLE LIQUIDS, N.O.S., 3, UN1993, PG II (LAB. PACK #1)		001 CF		00085	G	214 0001
b. <input type="checkbox"/> NON-RCRA HAZARDOUS WASTE LIQUID		001 DM		00007	G	231
c. <input type="checkbox"/> WASTE COMBUSTIBLE LIQUIDS, N.O.S., UN1993, PG III (MESH)		001 DM		00010	G	223
d. <input type="checkbox"/> NON-RCRA HAZARDOUS WASTE LIQUID		001 DF		00050	G	
e. <input type="checkbox"/> NON-RCRA HAZARDOUS WASTE LIQUID		002 DM		00100	G	223
f. <input type="checkbox"/> NON-RCRA HAZARDOUS WASTE LIQUID		002 DM		00060	G	281
g. <input type="checkbox"/> NON-RCRA HAZARDOUS WASTE SOLID		001 DM		00005	P	223
h.						
i.						
S. Additional Descriptions for Materials Listed Above 28a LAB PACK #1 28b LAB PACKS #7 P9 28c WATER & ANTI-FROST 28d ASPHALT EMULSION				T. Handling Codes for Wastes Listed Above 28e. OUS 28f. W. GREASE		
32. Special Handling Instructions and Additional Information See 1A 1 of 2						
33. Transporter Acknowledgement of Receipt of Materials					Date	
Printed/Typed Name LORNA A. LIND				Signature LORNA A. LIND		Month Day Year 10/05/01
34. Transporter Acknowledgement of Receipt of Materials					Date	
Printed/Typed Name				Signature		Month Day Year
35. Discrepancy Indication Space						

GENERATOR

TRANSPORTER

FACILITY



IN CASE OF EMERGENCY OR SPILL, CALL THE NATIONAL RESPONSE CENTER 1-800-424-8802: WITHIN CALIFORNIA, CALL 1-800-852-7550  
 GENERATOR  
 FACILITY

<b>UNIFORM HAZARDOUS WASTE MANIFEST</b>		1. Generator's US EPA ID No. C 9 0 9 0 3 6 0 1 6 9 1 2 0 0 0 1		Manifest Document No. 2 0 0 0 1		2. Page 1 of 3		Information in the shaded areas is not required by Federal law						
3. Generator's Name and Mailing Address IRVINE RANCH WATER DISTRICT (BAKER PLANT) 21002 Wisteria Lake Forrest, CA 92630 4. Generator's Phone (949) 453-5800					A. State Manifest Document Number 99692119									
5. Transporter 1 Company Name OCEAN BLUE ENVIRONMENTAL					6. US EPA ID Number C 9 0 9 0 3 6 0 1 6 9 1 2 0 0 0 1									
7. Transporter 2 Company Name					8. US EPA ID Number									
9. Designated Facility Name and Site Address CROSBY & OVERTON 1630 W. 17th. STREET LONG BEACH, CA. 90813					10. US EPA ID Number C 9 0 1 0 2 8 4 0 9 0 1 9									
11. US DOT Description (including Proper Shipping Name, Hazard Class, and ID Number)					12. Containers		13. Total		14. Unit		15. Waste Number			
					No.		Type		Quantity		Wt/Vol		State	
					a. 015		DIM		010095		G		314	
					b. 011		DIM		010025		P		314	
					c. 011		DF		010010		P		331	
d. 011		DF		01001		G		331						
J. Additional Descriptions for Materials Listed Above 11a. LAB PAC DRUMS # 2, 3, 4, 5 & 6 LP 20041 11b. OFF SPEC. AEROSOLS 18841 11c. LAB PAC OFF SPEC. PROPANE 11d. LAB PAC # 8 LP 20041					K. Handling Codes for Wastes Listed Above a. b. c. d.									
15. Special Handling Instructions and Additional Information REQUESTER: GILBERT OVALLE FOR JOHN 17993. SITE ADDRESS: WEAR APPROPRIATE PROTECTIVE CLOTHING: EMERGENCY TELEPHONE# (562) 624-4120 (24HRS), CONTACT: EROM# 11a. 128 11b. 126 11c. 126 11d. 154														
16. GENERATOR'S CERTIFICATION: I hereby declare that the contents of this consignment are fully and accurately described above by proper shipping name and are classified, packed, marked, and labeled, and are in all respects in proper condition for transport by highway according to applicable international and national government regulations.  If I am a large quantity generator, I certify that I have a program in place to reduce the volume and toxicity of waste generated to the degree I have determined to be economically practicable and that I have selected the practicable method of treatment, storage, or disposal currently available to me which minimizes the present and future threat to human health and the environment; OR, if I am a small quantity generator, I have made a good faith effort to minimize my waste generation and select the best waste management method that is available to me and that I can afford.														
Printed/Typed Name GILBERT OVALLE				Signature <i>Gilbert Ovalle</i>				Month Day Year 10/05/01						
17. Transporter 1 Acknowledgement of Receipt of Materials Printed/Typed Name EDWARD A. LONG				Signature <i>Edward A. Long</i>				Month Day Year 10/05/01						
18. Transporter 2 Acknowledgement of Receipt of Materials Printed/Typed Name				Signature				Month Day Year						
19. Discrepancy Indication Space														
20. Facility Owner or Operator Certification of receipt of hazardous materials covered by this manifest except as noted in Item 19. Printed/Typed Name				Signature				Month Day Year						

DO NOT WRITE BELOW THIS LINE.







**OCFA RECORD**





# ORANGE COUNTY FIRE AUTHORITY

Clerk of the Authority/Records Management

1 Fire Authority Road

Irvine, CA 92602

## FAX COVER PAGE

To: *Menadith Church - Reighton*

Fax #: *949-250-1114*

Phone #:

Number of Pages (including cover):

Date:

From: Robin Nelson, Management Assistant

Telephone: (714) 573-6043

Fax: (714) 368-8826

COMMENTS: *Here are copies of article.*



# ORANGE COUNTY FIRE AUTHORITY

Clerk of the Authority  
1 Fire Authority Road  
Irvine, CA 92602  
P.O. Box 57115  
Irvine, CA 92619-7115  
Phone (714) 573-6040  
Fax (714) 368-8826

## FAX COVER PAGE

To: Meredith Church/Leighton

Fax # 949-250-1114

Number of Pages (including cover): 1

Date: April 8, 2008

From: Robin Nelson-Glotfelty

Telephone # 714-573-6043

COMMENTS: The information you requested for MARIN & WISTERIA in LAKE FOREST is ready. Please send a check for \$5.00 payable to Orange County Fire Authority and a self-addressed, stamped envelope to the address (P. O. Box) listed above. Upon receipt, we will mail the reports to you.





**ORANGE COUNTY FIRE AUTHORITY**

Report run on: April 23, 2008 1:43 PM

BUSINESS RECORDS AT: 20996 MARIN  
LAKE FOREST

Bus Id: 29274      DBA: IRVINE RANCH WATER DISTRICT      Status: Active  
20996 MARIN      Bldg#      Ste#  
LAKE FOREST  
Last Insp Date: 13 DEC 2005      Bus Type: WATER UTILITY  
Insp Type: ROUTINE INSPECTION      Insp Category: CATEGORY 5, NO HAZARDOUS MATERIALS  
Alarm Type:

Sprinkler Type: 1 WET PIPE, SUPERVISED      Sprinkler Due Date: 17 JAN 2007

**VIOLATIONS**

<u>Identify Date:</u> 13 DEC 2005			
<u>House Keeping:</u> 0	<u>Fire Protect:</u> 1	<u>High Piled:</u> 0	<u>Electrical:</u> 0
<u>Exiting:</u> 0	<u>Permit Related:</u> 0	<u>Hazmat Related:</u> 0	<u>Misc:</u> 0
<u>Notice Issued Dt:</u> 13 DEC 2005		<u>Self Clr Issued Dt:</u>	
<u>1st Reinsp clear:</u> Y	<u>Date:</u> 17 JAN 2006	<u>2nd Reinsp clear:</u>	<u>Date:</u>
<u>3rd Reinsp clear:</u>	<u>Date:</u>	<u>4th Reinsp clear:</u>	<u>Date:</u>
<u>5th Reinsp clear:</u>	<u>Date:</u>		

**PERMITS : NO PERMITS FOUND \*\*\*\*\***

**CHEMICALS : NO CHEMICALS FOUND \*\*\*\*\***

**\*\*\*\*\* END OF REPORT \*\*\*\*\***



**ORANGE COUNTY FIRE AUTHORITY**

Report run on: April 23, 2008 1:44 PM

BUSINESS RECORDS AT: 21082 WISTERIA  
LAKE FOREST

Bus Id: 23794      DBA: IRWD - V P BAKER FILTRATION PLANT      Status: Active  
21082 WISTERIA      Bldg# A      Ste#  
LAKE FOREST  
Last Insp Date: 12 MAR 2008      Bus Type: WATER UTILITY  
Insp Type: ROUTINE INSPECTION      Insp Category: CATEGORY 4, LOW/ROUTINE HAZARDS  
Alarm Type:

Sprinkler Type:0      Sprinkler Due Date:

**VIOLATIONS**

**PERMITS**

<u>Permit No</u>	<u>Permit description</u>	<u>Issued Date</u>	<u>Expiration Date</u>	<u>Occupancy Load</u>
AL1R	Liquefied Petroleum Gas Reissuance	15 DEC 2007	15 DEC 2008	
M150	\$35 Permit Admin/Drive	17 MAR 2008	17 MAR 2009	

**CHEMICALS**

<u>Trade Name/ Comp Name</u>	<u>Component Cas#</u>	<u>Component Percent</u>	<u>Component Carcin</u>	<u>Component Ahm</u>	<u>Chem Id</u>	<u>Max Day Amt</u>	<u>Unit</u>
PROPANE PROPANE	74986	99	N	Y	286141	288	GA

\*\*\*\*\* END OF REPORT \*\*\*\*\*





**ORANGE COUNTY FIRE AUTHORITY**

Report run on: April 23, 2008 1:44 PM

BUSINESS RECORDS AT: 21082 WISTERIA  
LAKE FOREST

Bus Id: 80866      DBA: IRWD - V P BAKER FILTRATION PLANT      Status: Active  
21082 WISTERIA      Bldg# B      Ste#  
LAKE FOREST  
Last Insp Date: 12 MAR 2008      Bus Type: WATER UTILITY  
Insp Type: ROUTINE INSPECTION      Insp Category: CATEGORY 2, HIGH HAZARDS  
Alarm Type:

Sprinkler Type:0      Sprinkler Due Date:

**VIOLATIONS**

Identify Date:  
House Keeping: 0      Fire Protect: 0      High Piled: 0      Electrical: 0  
Exiting: 0      Permit Related: 0      Hazmat Related: 0      Misc: 0  
Notice Issued Dt:      Self Clr Issued Dt:  
1st Reinsp clear:      Date:      2nd Reinsp clear:      Date:  
3rd Reinsp clear:      Date:      4th Reinsp clear:      Date:  
5th Reinsp clear:      Date:

**PERMITS**

<u>Permit No</u>	<u>Permit description</u>	<u>Issued Date</u>	<u>Expiration Date</u>	<u>Occupancy Load</u>
F.3.3	COMBUSTIBLE LIQUIDS	04 MAR 2003	15 DEC 2003	

**CHEMICALS**

<u>Trade Name/ Comp Name</u>	<u>Component Cas#</u>	<u>Component Percent</u>	<u>Component Carcin</u>	<u>Component Ahm</u>	<u>Chem Id</u>	<u>Max Day Amt</u>	<u>Unit</u>
DIESEL FUEL					286011	0	GA
DIESEL FUEL NO.2- PETROLEUM MID- DISTILLA'	68476346	99	N	N			
DIESEL FUEL					286011	0	GA
NAPHTHALENE	91203	1	N	N			

\*\*\*\*\* END OF REPORT \*\*\*\*\*



**ORANGE COUNTY FIRE AUTHORITY**

Report run on: April 23, 2008 1:44 PM

BUSINESS RECORDS AT: 21082 WISTERIA  
LAKE FOREST

Bus Id: 80867      DBA: IRWD - V P BAKER FILTRATION PLANT      Status: Active  
21082 WISTERIA      Bldg# C      Ste#  
LAKE FOREST  
Last Insp Date: 12 MAR 2008      Bus Type: WATER UTILITY  
Insp Type: ROUTINE INSPECTION      Insp Category: CATEGORY 4, LOW/ROUTINE HAZARDS  
Alarm Type:  
Sprinkler Type:1      WET PIPE, SUPERVISED      Sprinkler Due Date: 01 MAR 2009

**VIOLATIONS**

**PERMITS**

<u>Permit No</u>	<u>Permit description</u>	<u>Issued Date</u>	<u>Expiration Date</u>	<u>Occupancy Load</u>
------------------	---------------------------	--------------------	------------------------	-----------------------

**CHEMICALS**

<u>Trade Name/ Comp Name</u>	<u>Component Cas#</u>	<u>Component Percent</u>	<u>Component Carcin</u>	<u>Component Ahn</u>	<u>Chem Id</u>	<u>Max Day Amt</u>	<u>Unit</u>
----------------------------------	---------------------------	------------------------------	-----------------------------	--------------------------	----------------	--------------------	-------------

\*\*\*\*\* END OF REPORT \*\*\*\*\*





**ORANGE COUNTY FIRE AUTHORITY**

Report run on: April 23, 2008 1:44 PM

BUSINESS RECORDS AT: 21082 WISTERIA  
LAKE FOREST

Bus Id: 80868      DBA: IRVNE RANCH WATER DISTRICT      Status: Active  
21082 WISTERIA      Bldg# D      Ste#  
LAKE FOREST  
Last Insp Date: 12 MAR 2007      Bus Type: WATER UTILITY  
Insp Type: ROUTINE INSPECTION      Insp Category: CATEGORY 4, LOW/ROUTINE HAZARDS  
Alarm Type:

Sprinkler Type: 1 WET PIPE, SUPERVISED      Sprinkler Due Date: 20 DEC 2010

**VIOLATIONS**

Identify Date:  
House Keeping: 0      Fire Protect: 0      High Piled: 0      Electrical: 0  
Exiting: 0      Permit Related: 0      Hazmat Related: 0      Misc: 0  
Notice Issued Dt:      Self Clr Issued Dt:  
1st Reinsp clear:      Date:      2nd Reinsp clear:      Date:  
3rd Reinsp clear:      Date:      4th Reinsp clear:      Date:  
5th Reinsp clear:      Date:

**PERMITS**

<u>Permit No</u>	<u>Permit description</u>	<u>Issued Date</u>	<u>Expiration Date</u>	<u>Occupancy Load</u>
F.3.3	COMBUSTIBLE LIQUIDS	15 DEC 2005	15 DEC 2006	

**CHEMICALS**

<u>Trade Name/ Comp Name</u>	<u>Component Cas#</u>	<u>Component Percent</u>	<u>Component Carcin</u>	<u>Component Ahm</u>	<u>Chem Id</u>	<u>Max Day Amt</u>	<u>Unit</u>
DIESEL DIESEL	68476346	100	N	N	346183	223	GA

\*\*\*\*\* END OF REPORT \*\*\*\*\*



ORANGE COUNTY FIRE AUTHORITY

Report run on: April 23, 2008 1:44 PM

BUSINESS RECORDS AT: 21082 WISTERIA LAKE FOREST

Bus Id: 99233 DBA: IRWD - LOS ALISOS EMERGENCY RESERVOIR Status: Active
21082 WISTERIA Bldg# E Ste#
LAKE FOREST
Last Insp Date: 23 JAN 2008 Bus Type: VACANT PROPERTY
Insp Type: ROUTINE INSPECTION Insp Category: CATEGORY 3, NO HAZARDOUS MATERIALS
Alarm Type:
Sprinkler Type:0 Sprinkler Due Date:

VIOLATIONS

PERMITS

Table with 5 columns: Permit No, Permit description, Issued Date, Expiration Date, Occupancy Load

CHEMICALS

Table with 7 columns: Trade Name/Comp Name, Component Cas#, Component Percent, Component Carcin, Component Ahm, Chem Id, Max Day Amt, Unit

\*\*\*\*\* END OF REPORT \*\*\*\*\*



II



J



## Certified Sanborn® Map Report



Sanborn® Library search results  
Certification # FDD7-4D55-8280

**Former IRWD Site**  
**Commercentre Drive/Biscayne Parkway Drive**  
**Lake Forest, CA 92630**

**Inquiry Number 2181254.3**

**March 28, 2008**



**EDR®** Environmental  
Data Resources Inc

### **The Standard in Environmental Risk Information**

440 Wheelers Farms Rd  
Milford, Connecticut 06461

#### **Nationwide Customer Service**

Telephone: 1-800-352-0050  
Fax: 1-800-231-6802  
Internet: [www.edrnet.com](http://www.edrnet.com)

# Certified Sanborn® Map Report

3/28/08

**Site Name:**

Former IRWD Site  
Commercentre Drive/Biscayne  
Lake Forest, CA 92630

**Client Name:**

Leighton and Associates, Inc.  
17781 Cowan  
Irvine, CA 92614

EDR Inquiry # 2181254.3

Contact: Meredith Church



EDR® Environmental  
Data Resources Inc

The complete Sanborn Library collection has been searched by EDR, and fire insurance maps covering the target property location provided by Leighton and Associates, Inc. were identified for the years listed below. The certified Sanborn Library search results in this report can be authenticated by visiting [www.edrnet.com/sanborn](http://www.edrnet.com/sanborn) and entering the certification number. Only Environmental Data Resources Inc. (EDR) is authorized to grant rights for commercial reproduction of maps by Sanborn Library LLC, the copyright holder for the collection.

## Certified Sanborn Results:

**Site Name:** Former IRWD Site  
**Address:** Commercentre Drive/Biscayne Parkway Drive  
**City, State, Zip:** Lake Forest, CA 92630  
**Cross Street:**  
**P.O. #** NA  
**Project:** 011797-003  
**Certification #** FDD7-4D55-8280



Sanborn® Library search results  
Certification # FDD7-4D55-8280

## UNMAPPED PROPERTY

This report certifies that the complete holdings of the Sanborn Library, LLC collection have been searched based on client supplied target property information, and fire insurance maps covering the target property were not found.

Total Maps: 0

The Sanborn Library includes more than 1.2 million Sanborn fire insurance maps, which track historical property usage in approximately 12,000 American cities and towns. Collections searched:

- Library of Congress
- University Publications of America
- EDR Private Collection

## Limited Permission To Make Copies

Leighton and Associates, Inc. (the client) is permitted to make up to THREE photocopies of this Sanborn Map transmittal and each fire insurance map accompanying this report solely for the limited use of its customer. No one other than the client is authorized to make copies. Upon request made directly to an EDR Account Executive, the client may be permitted to make a limited number of additional photocopies. This permission is conditioned upon compliance by the client, its customer and their agents with EDR's copyright policy; a copy of which is available upon request.

### Disclaimer - Copyright and Trademark notice

This Report contains certain information obtained from a variety of public and other sources reasonably available to Environmental Data Resources, Inc. It cannot be concluded from this Report that coverage information for the target and surrounding properties does not exist from other sources. NO WARRANTY EXPRESSED OR IMPLIED, IS MADE WHATSOEVER IN CONNECTION WITH THIS REPORT. ENVIRONMENTAL DATA RESOURCES, INC. SPECIFICALLY DISCLAIMS THE MAKING OF ANY SUCH WARRANTIES, INCLUDING WITHOUT LIMITATION, MERCHANTABILITY OR FITNESS FOR A PARTICULAR USE OR PURPOSE. ALL RISK IS ASSUMED BY THE USER. IN NO EVENT SHALL ENVIRONMENTAL DATA RESOURCES, INC. BE LIABLE TO ANYONE, WHETHER ARISING OUT OF ERRORS OR OMISSIONS, NEGLIGENCE, ACCIDENT OR ANY OTHER CAUSE, FOR ANY LOSS OF DAMAGE, INCLUDING, WITHOUT LIMITATION, SPECIAL, INCIDENTAL CONSEQUENTIAL, OR EXEMPLARY DAMAGES. ANY LIABILITY ON THE PART OF ENVIRONMENTAL DATA RESOURCES, INC. IS STRICTLY LIMITED TO A REFUND OF THE AMOUNT PAID FOR THIS REPORT. Purchaser accepts this Report "AS IS". Any analyses, estimates, ratings, environmental risk levels or risk codes provided in this Report are provided for illustrative purposes only, and are not intended to provide, nor should they be interpreted as providing any facts regarding, or prediction or forecast of, any environmental risk for any property. Only a Phase I Environmental Site Assessment performed by an environmental professional can provide information regarding the environmental risk for any property. Additionally, the information provided in this Report is not to be construed as legal advice.

Copyright 2008 by Environmental Data Resources, Inc. All rights reserved. Reproduction in any media or format, in whole or in part, of any report or map of Environmental Data Resources, Inc., or its affiliates, is prohibited without prior written permission. EDR and its logos (including Sanborn and Sanborn Map) are trademarks of Environmental Data Resources, Inc. or its affiliates. All other trademarks used herein are the property of their respective owners.



K





**EDR**® Environmental  
Data Resources Inc

**The EDR-City Directory**  
*Abstract*

**Former IRWD Site**  
20996 Marin  
Lake Forest, CA 92630

**Inquiry Number: 2181254.6**

**Tuesday, April 08, 2008**

**The Standard in  
Environmental Risk  
Information**

440 Wheelers Farms Road  
Milford, Connecticut 06461

**Nationwide Customer Service**

Telephone: 1-800-352-0050  
Fax: 1-800-231-6802  
Internet: [www.edrnet.com](http://www.edrnet.com)



# EDR City Directory Abstract

Environmental Data Resources, Inc.'s (EDR) City Directory Abstract is a screening report designed to assist environmental professionals in evaluating potential liability on a target property resulting from past activities. EDR's City Directory Abstract includes a search and abstract of available city directory data. For each address, the directory lists the name of the corresponding occupant at five year intervals.

*Thank you for your business.*  
Please contact EDR at 1-800-352-0050  
with any questions or comments.

## Disclaimer - Copyright and Trademark Notice

This Report contains certain information obtained from a variety of public and other sources reasonably available to Environmental Data Resources, Inc. It cannot be concluded from this Report that coverage information for the target and surrounding properties does not exist from other sources. **NO WARRANTY EXPRESSED OR IMPLIED, IS MADE WHATSOEVER IN CONNECTION WITH THIS REPORT. ENVIRONMENTAL DATA RESOURCES, INC. SPECIFICALLY DISCLAIMS THE MAKING OF ANY SUCH WARRANTIES, INCLUDING WITHOUT LIMITATION, MERCHANTABILITY OR FITNESS FOR A PARTICULAR USE OR PURPOSE. ALL RISK IS ASSUMED BY THE USER. IN NO EVENT SHALL ENVIRONMENTAL DATA RESOURCES, INC. BE LIABLE TO ANYONE, WHETHER ARISING OUT OF ERRORS OR OMISSIONS, NEGLIGENCE, ACCIDENT OR ANY OTHER CAUSE, FOR ANY LOSS OR DAMAGE, INCLUDING, WITHOUT LIMITATION, SPECIAL, INCIDENTAL, CONSEQUENTIAL, OR EXEMPLARY DAMAGES. ANY LIABILITY ON THE PART OF ENVIRONMENTAL DATA RESOURCES, INC. IS STRICTLY LIMITED TO A REFUND OF THE AMOUNT PAID FOR THIS REPORT.** Purchaser accepts this Report "AS IS". Any analyses, estimates, ratings, environmental risk levels or risk codes provided in this Report are provided for illustrative purposes only, and are not intended to provide, nor should they be interpreted as providing any facts regarding, or prediction or forecast of, any environmental risk for any property. Only a Phase I Environmental Site Assessment performed by an environmental professional can provide information regarding the environmental risk for any property. Additionally, the information provided in this Report is not to be construed as legal advice.

Copyright 2008 by Environmental Data Resources, Inc. All rights reserved. Reproduction in any media or format, in whole or in part, of any report or map of Environmental Data Resources, Inc. or its affiliates is prohibited without prior written permission.

EDR and its logos (including Sanborn and Sanborn Map) are trademarks of Environmental Data Resources, Inc. or its affiliates. All other trademarks used herein are the property of their respective owners.

## SUMMARY

- ***City Directories:***

Business directories including city, cross reference and telephone directories were reviewed, if available, at approximately five year intervals for the years spanning 1981 through 2006. (These years are not necessarily inclusive.) A summary of the information obtained is provided in the text of this report.



Date EDR Searched Historical Sources: April 8, 2008

**Target Property:**

20996 Marin  
Lake Forest, CA 92630

<u>Year</u>	<u>Uses</u>	<u>Source</u>
1981	Street Not Listed in Research Source	Haines Criss-Cross Directory
1986	Street Not Listed in Research Source	Haines Criss-Cross Directory
1991	Los Alisos Water District	Haines Criss-Cross Directory
1996	Los Alisos Water District	Haines Criss-Cross Directory
2001	Address Not Listed in Research Source	Haines Criss-Cross Directory
2006	Address Not Listed in Research Source	Haines Criss-Cross Directory

**Adjoining Properties**

**SURROUNDING**

Multiple Addresses  
Lake Forest, CA 92630

<u>Year</u>	<u>Uses</u>	<u>Source</u>
1981	Street Not Listed in Research Source	Haines Criss-Cross Directory
1986	Street Not Listed in Research Source	Haines Criss-Cross Directory
1991	<u>**Marin**</u>	Haines Criss-Cross Directory
	No Return (20991)	Haines Criss-Cross Directory
	No other addresses in 20991-21015 range	Haines Criss-Cross Directory
	<u>**Wisteria**</u>	Haines Criss-Cross Directory
	Address not listed in research source (21082)	Haines Criss-Cross Directory
	Address not listed in research source (21084)	Haines Criss-Cross Directory
1996	<u>**Marin**</u>	Haines Criss-Cross Directory
	No Return (20991)	Haines Criss-Cross Directory
	No other addresses in 20991-21015 range	Haines Criss-Cross Directory
	<u>**Wisteria**</u>	Haines Criss-Cross Directory

<u>Year</u>	<u>Uses</u>	<u>Source</u>
1996	Address not listed in research source (21082)	Haines Criss-Cross Directory
	Address not listed in research source (21084)	Haines Criss-Cross Directory
2001	<b><u>**Marin**</u></b>	Haines Criss-Cross Directory
	Residence (20991)	Haines Criss-Cross Directory
	Residence (20995)	Haines Criss-Cross Directory
	Residence (21011)	Haines Criss-Cross Directory
	Residence (21015)	Haines Criss-Cross Directory
	<b><u>**Wisteria**</u></b>	Haines Criss-Cross Directory
	Address not listed in research source (21082)	Haines Criss-Cross Directory
	Address not listed in research source (21084)	Haines Criss-Cross Directory
2006	<b><u>**Marin**</u></b>	Haines Criss-Cross Directory
	Residence (20991)	Haines Criss-Cross Directory
	Residence (20995)	Haines Criss-Cross Directory
	Residence (21011)	Haines Criss-Cross Directory
	Residence (21015)	Haines Criss-Cross Directory
	<b><u>**Wisteria**</u></b>	Haines Criss-Cross Directory
	Address not listed in research source (21082)	Haines Criss-Cross Directory
	Address not listed in research source (21084)	Haines Criss-Cross Directory



L





# FACSIMILE COVER SHEET

25550 Commercentre Drive  
 Lake Forest, California 92630  
 Telephone: (949) 461-3400  
 Public Works Fax: (949) 461-3511 or (949) 461-3512

TO: MERIDETH CHURCH

COMPANY/ORGANIZATION: \_\_\_\_\_

FACSIMILE NO: (949) 250-1114 TEL. NO: (949) 681-4208

FROM: STEVE GONZALES DATE: 4/3/2008

TOTAL NUMBER OF PAGES INCLUDING THIS ONE: 2

### MESSAGE:

BUILDING PERMIT REFERENCE CARD FOR AN  
ADMINISTRATIVE FACILITY FOR THE LOS ALISOS  
WATER DISTRICT LOCATED @ 20996 MARIN.

- ISSUED BY THE COUNTY OF ORANGE

- PERMIT # 80041

- ISSUE DATE: 10/11/1990



20996 Marin 10-11-90 El Toro

Los Alisos Water Dist  
administration facility,

BUILDING	<del>PLASTER</del>	PLUMBING	HEATING	ELECTRIC
80041	PLUMB 295289 7.8.92	259804 11.28.90 <u>261194</u> 12/26/90 267163 4/18/91	ME910607002	

CRS F 0260-176

**APPLICATION FOR BUILDING PERMIT**  
CITY OF LAKE FOREST

FOR APPLICANT TO FILL IN (PRINT OR TYPE)

Building Address 21082 WISTERIA  
LAKE FOREST CA

Owner LOS ALKES WATER DISTRICT

Mail Address 22312 MURLEND, BD

City LAKE FOREST, CA Tel. No. 818-0881

Contractor ELLIOT COEP

Address \_\_\_\_\_  
City \_\_\_\_\_ Tel. No. \_\_\_\_\_  
State Lic. No. \_\_\_\_\_ Lic. Class \_\_\_\_\_

**LICENSE CONTRACTORS**  
I hereby affirm that I am licensed under the provisions of Chapter 9 (commencing with Section 7000) of Division 3 of the Business and Professions Code and my license is in full force and effect.

License Class \_\_\_\_\_ Date \_\_\_\_\_  
Contractor \_\_\_\_\_

**OWNER-BUILDER DECLARATION**  
I, as owner of the property or my employees with wages at their sole compensation, will do the work, and the structure is not intended or offered for sale (Sec. 7044, Business and Professions Code)

I, as owner of the property, am exclusively contracting with licensed contractors to construct the project (Sec. 7044, Business and Professions Code).

I am exempt under Sec. 8, A. P. C. for this reason:  
Date 9-30-92 Owner Marc Fajoy

**WORKERS' COMPENSATION DECLARATION**  
I hereby affirm that I have a certificate of consent to self-insure, or a certificate of Workers' Compensation Insurance, or a certified copy thereof (Sec. 3830, Lab. C.).

Policy No. \_\_\_\_\_ Company \_\_\_\_\_  
 Certified copy is hereby furnished.  Certified copy is filed with the city building inspection department.

Date \_\_\_\_\_ Applicant \_\_\_\_\_

**CERTIFICATE OF EXEMPTION FROM WORKERS' COMPENSATION INSURANCE**  
I certify that in the performance of the work for which this permit is issued, I shall not employ any person in any manner so as to become subject to the Workers' Compensation Law, of California.

Date 9-30-92 Applicant Marc Fajoy  
NOTE TO APPLICANT: If, after making this Certificate of Exemption, you should become subject to the Workers' Compensation provisions of the Labor Code, you must forthwith comply with such provisions or this permit shall be deemed revoked.

**CONSTRUCTION LENDING AGENCY**  
I hereby affirm that there is a construction lending agency for the performance of the work for which this permit is issued (Sec. 3097, Civ. C.).

Lender's Name \_\_\_\_\_ Lender's Address \_\_\_\_\_  
This permit will expire if work is not started within one year of issuance or if the work is abandoned or suspended for one year. I certify that I have read this application and state that the above information is correct. I agree to comply with all city ordinances and state laws relating to building construction, and hereby authorize representatives of this city to enter upon the above-mentioned property for inspection purposes.

Marc Fajoy Signature of Applicant or Agent  
Date 9-30-92

Architect or Engineer BOYLE LIC. NO. C1807

Address 1501 QUAIL ST

CITY NEWPORT BEACH Tel. No. 476330

Applicant MARC FAYOY Tel. No. \_\_\_\_\_

Address \_\_\_\_\_  
City \_\_\_\_\_ Zip \_\_\_\_\_  
Legal Description \_\_\_\_\_ Lot No. \_\_\_\_\_  
Block \_\_\_\_\_ Tract \_\_\_\_\_  
Size of Lot \_\_\_\_\_ No. of Bldgs. Now on Lot \_\_\_\_\_

City of Lake Forest  
23778 Mercury Road  
Lake Forest, Ca. 92630  
(714) 707-5583



San. Fr. Size 3200 No. of Stories \_\_\_\_\_ No. of Families NA

Description of Work VEHICLE MAINT. SHOP BLDG

Use of Existing Bldg. VACANT

Check One  
New  Alter  Demol   
Add  Repair  Occupancy   
Use Zone \_\_\_\_\_ Map No. \_\_\_\_\_  
Special Conditions \_\_\_\_\_

Final Date 9-5-93 By WJH

Assessor 129 pages 13 Parcel 36

Group BI Type Construction Fire 1 Processed By WJH

Statistical Classification \_\_\_\_\_ Sewer Map \_\_\_\_\_  
Class No. 432 Dwell. Units 70 Bk \_\_\_\_\_ Pg \_\_\_\_\_

VALUATION \$ 350,000.  
REVISED VALUATION \$ \_\_\_\_\_

Plan Check Fee \$ 119.92

Additional Plan Check Fee \_\_\_\_\_  
Permit Fee DBLES 3407.50  
Insurance Fee 2.50  
Drainage Fee \_\_\_\_\_  
Dwelling Unit Fee \_\_\_\_\_  
Strong Motion Fee 73.50  
Traffic Fee \_\_\_\_\_

TOTAL \$ 3432.92

PLAN CHECK VALIDATION 000010  
7-6-92 RJH M.O.  
CASH

PERMIT VALIDATION 9-30-92  
WJH CASH

CK. 000-362 M.O.







*Pldy Permit # = 62*

**APPLICATION FOR PLUMBING PERMIT**

**CITY OF LAKE FOREST**

Building Address 21082 WESTERIA

Owner Los Alisos Water District

Mail Address 21082 Westeria Tel. No. \_\_\_\_\_

City LAKE FOREST

Contractor H.C.K. Macchioricci

Address 3900 Prospect Hills

City Yuba Linda Tel. No. 528-1305

State Lic. No. 454151 Lic. Class C-36

**LICENSED CONTRACTOR'S DECLARATION**

I hereby affirm that I am licensed under the provisions of Chapter 9 (commencing with Section 7000) of Division 3 of the Business and Professions Code, and my license is in full force and effect.

License Class C-36

Date 10-5-92

Contractor H.C.K. Macchioricci

**OWNER-BUILDER DECLARATION**

I hereby affirm that I am exempt from the Contractor's License Law for the following reason (Sec. 7031.3, Business and Professions Code):

- I, as owner of the property, or my employees with wages at their sole compensation, will do the work, and the structure is not intended or offered for sale (Sec. 7044, Business and Professions Code).
- I, as owner of the property, am exclusively contracting with licensed contractors to construct the project (Sec. 7044, Business and Professions Code).
- I am exempt under Sec. \_\_\_\_\_, B. & P. C. for this reason: \_\_\_\_\_

Date \_\_\_\_\_ Owner \_\_\_\_\_

**WORKERS' COMPENSATION DECLARATION**

I hereby affirm that I have a certificate of consent to self-insure, or a certificate of Workers' Compensation Insurance, or a certified copy thereof (Sec. 3900, Lab. C.).

Policy No. MC 110456947 Company CNA

Certified copy is hereby furnished.  Certified copy is filed with the city building inspection department.

Date 10-5-92 Applicant H.C.K. Macchioricci

**CERTIFICATE OF EXEMPTION FROM WORKERS' COMPENSATION INSURANCE**

I certify that in the performance of the work for which this permit is issued, I shall not employ any person in any manner so as to become subject to the Workers' Compensation Laws of California.

Date \_\_\_\_\_ Applicant \_\_\_\_\_

**NOTICE TO APPLICANT:** If, after making this Certificate of Exemption, you should become subject to the Workers' Compensation provisions of the Labor Code, you must forthwith comply with such provisions or this permit shall be deemed revoked.

I hereby affirm that there is a construction lending agency for the performance of the work for which this permit is issued (Sec. 3097, Civ. C.).

CONSTRUCTION LENDING AGENCY \_\_\_\_\_ Lender's Address \_\_\_\_\_

This permit will expire if work is not started within 180 days of issuance or if the work is abandoned or suspended for 180 days. I certify that I have read this application and state that the above information is correct; I agree to comply with all city ordinances and state laws relating to building construction, and hereby authorize representatives of this city to enter upon the above mentioned property for inspection purposes.

Signature of Applicant or Agent H.C.K. Macchioricci Date 10-5-92

FOR APPLICANT TO FILL IN IF ANY OF THE FOLLOWING		Q	Fee
Plumbing	Teller		
	Bath Tub		
	Shower		
	Lavatory		
1	Sink		7.00
	Dishwasher		
	Clothes Washer		
	Swimming Pool Escapator		
	Lawn Sprinkler System		
1	Water Heats		7.00
1	Gas System		7.00
	Outlets		
	Outlets over 5 per system		
4	POUR DRAIN		28.00
1	GREASE INTERCEPTOR		16.00
PLAN CHECK FEE			
PLUMBING PERMIT ISSUING FEE \$		25	00
TOTAL FEE \$		63	00

PLAN CHECK VALIDATION



City of Lake Forest  
2378 Mercury Road  
Lake Forest, Ca. 92630  
(714) 207-5583

PERMIT VALIDATION

*Handwritten initials and date: 10-5-92*

000382

RECEIVED FOR NO. 1











**APPLICATION FOR ELECTRICAL PERMIT**

**CITY OF LAKE FOREST**  
 FOR APPLICANT TO FILE IN FRONT OF BOARD  
 Building Address: 21082 HUSTONA  
 Owner: LOS ALAMOS WATER DIST  
 Mail Address: PO BOX 600  
 City: LAKE FOREST Tel. No. 830-0380  
 Contractor: STEVENA ELECTRIC CO.  
 Address: 3070 E. FARGUE DRIVE  
 City: ANAHEIM, CA. Tel. No. 652-0100  
 Date Lic. No. C-10 100803 Lic. Class

I hereby affirm that I am licensed under the provisions of Chapter 9 (commencing with Section 7003) of Division 3 of the Business and Professions Code, and my license is in full force and effect.

License Class: C-10  
 Date: 10-8-92  
 Licensed Contractor's Declaration  
 I, as owner of the property, or my employees with wages as their sole compensation, will do no work, and the structure is not intended or offered for sale (Sec. 7044, Business and Professions Code).  
 I, as owner of the property, am exclusively contracting with licensed contractors to construct the project (Sec. 7044, Business and Professions Code).  
 I am exempt under Sec. 8, 8, & P. C. for this reason:  
 Date: \_\_\_\_\_ Owner: \_\_\_\_\_  
 Contractor: CIO WELCH  
 SPECIALISTS

**OWNER-BUILDER DECLARATION**  
 I hereby affirm that I am exempt from the Contractor's License Law for the following reason (Sec. 7031.5, Business and Professions Code):  
 I, as owner of the property, or my employees with wages as their sole compensation, will do no work, and the structure is not intended or offered for sale (Sec. 7044, Business and Professions Code).  
 I, as owner of the property, am exclusively contracting with licensed contractors to construct the project (Sec. 7044, Business and Professions Code).  
 I am exempt under Sec. 8, 8, & P. C. for this reason:  
 Date: \_\_\_\_\_ Owner: \_\_\_\_\_

**WORKERS' COMPENSATION DECLARATION**  
 I hereby affirm that I have a certificate of consent to self-insure, or a certificate of Workers' Compensation insurance or a certified policy No. 73 PRO-889-002 company NATIONALWIDE MUTUAL INSURANCE CO.  
 Certified copy is hereby furnished.  Certified copy is filed with the city building inspection department.  
 Date: 10/8/92 Applicant: CHARLES SPENCER

**CERTIFICATE OF EXEMPTION FROM WORKERS' COMPENSATION INSURANCE**  
 I certify that in the performance of the work for which this permit is issued, I shall not employ any person in any manner so as to become subject to the Workers' Compensation Laws of California.  
 Date: \_\_\_\_\_ Applicant: \_\_\_\_\_

**CONSTRUCTION LENDING AGENCY**  
 I hereby affirm that there is a construction lending agency for the performance of the work for which this permit is issued.  
 Lender's Address: \_\_\_\_\_

This permit will expire if work is not started within 120 days of issuance or if the work is abandoned or suspended for 120 days. I certify that I have read this application and state that the above information is correct. I agree to comply with all city ordinances and state laws relating to building construction, and hereby authorize representatives of this city to enter upon the above-mentioned premises for inspection purposes.  
 Signature of Applicant or Agent: Charles C. Spencer Date: 10/8/92

FOR APPLICANT TO FILE IN FRONT OF BOARD	FOR APPLICANT TO FILE IN FRONT OF BOARD	FOR APPLICANT TO FILE IN FRONT OF BOARD
Number of Residential Buildings & Pools	1	25
3 & 4 Family, Semi-Attached	1	57
Multi-Family, No. of Units	0	0
Residential Swimming Pools	0	0
Outdoor Lighting	10	11
Total No. of Poles	70	44
Lighting	70	44
Total No. of Poles	70	44
Power Apparatus & Large Appliances	4	4
Size & Type HP, KV, KVA, or RVAR	4	4
Up to 1 Incl.	4	4
Over 1 to 10 Incl.	0	0
Over 10 to 50 Incl.	0	0
Over 50 to 100 Incl.	0	0
Over 100	0	0
Services	1	1
0 - 200 Amp. Under 600 V	1	1
201 - 1000 Amp. Under 600 V	0	0
Over 1000 Amp. or Over 600 V	0	0
Temp. Power Pole & Appurtenances	0	0
Sign. with One Branch Circuit	0	0
Additional Sign Branch Circuits	0	0
Wire, Conductors & Conductors	2	2
Other (See Compil. Fee Sched.)	0	0
PERMIT FEE	289.60	289.60
PLAN CHECKING FEE	0	0
PERMIT ISSUING FEE	0	0
TOTAL FEE	289.60	289.60

PLAN CHECK VALIDATION  
 CK. CASH M.O.  
 PERMIT VALIDATION  
 \$ 289.60  
 10-8-92-MCS

INSPECTOR COPY







# APPLICATION FOR BUILDING PERMIT

CITY OF

FOR APPLICANT TO FILL IN (PRINT OR TYPE)

Building Address: Wisterville

Owner: Lake Forest

Mail Address: 10182 Wisterville

City: Lake Forest

Contractor: ALLEN MECHANICAL

Address: 3100 Prosper Ave

City: Yorkville

State Lic No. 454151

Tel No. 588-1309

Lic Class: 1-C

Architect or Engineer

Address

City

Applicant Address

City

Legal Description

Block

Site of Lot

Tract

No. of Bldgs. Now on Lot

Lot No

Zip

Tel. No.

City

Address

City

Tract

No. of Bldgs. Now on Lot

Sec. Pt. Size 1000

Description of Work Specialty

No. of Stories 1-1/2

No. of Families 55

Use of Existing Bldg. Classified

Check One

New  Alter  Demol

Add  Repair  Occupancy

Use Zone Map No.

Special Conditions

Final Date 4-5-93 By WLUWA

Altogether 610 Pages

Map Book B-2 Type Construction ERT File No. 204 Parcel Processed By RWH

Statistical Classification

Class No. 1/3 Dwell. Units 10 Sewer Map Fo

VALUATION \$ 5000.00

REVISED VALUATION \$

Plan Check Fee \$

Additional Plan Check Fee \$ 145.00

Permit Fee \$ 15.00

Issuance Fee \$

Dwelling Unit Fee \$ 1.00

Strong Motion Fee

Traffic Fee

TOTAL \$ 159.00

**LICENSED CONTRACTOR'S DECLARATION**

I hereby affirm that I am licensed under the provisions of Chapter 9, conforming with Section 70001 of Division 3 of the Business and Professions Code, and my license is in full force and effect.

License Class: 9-16

Date: 3-28-93

Contractor: Allen Mechanical

**OWNER-BUILDER DECLARATION**

I hereby affirm to claim exemption from the contractor license law for the following reason (Sec 70215, Business and Professions Code):

I am the owner of the property and my employees with wages at their sole compensation will do the work, and the structure is not intended to be offered for sale (Sec 7044, Business and Professions Code)

I am the owner of the property, am exclusively contracting with licensed contractors to construct the project (Sec 7044, Business and Professions Code)

I am an exempt employer (Sec 85 P. C. for this reason)

Owner:

**WORKERS' COMPENSATION DECLARATION**

I hereby affirm that I am a contractor as defined in Section 70001 of Division 3 of the Business and Professions Code, and I am required to carry workers' compensation insurance for my employees.

I am insured by:

Company:

Address:

**CERTIFICATE OF EXEMPTION FROM WORKERS' COMPENSATION INSURANCE**

I hereby affirm that the performance of the work for which this permit is issued shall not employ any person in any manner as to become subject to the Workers' Compensation Laws of California.

Exempt from the performance of the work for which this permit is issued:

Exemption:

**CONSTRUCTION LENDING AGENCY**

I hereby affirm that I am a construction lending agency for the performance of the work for which this permit is issued.

Agency Name:

Address:

I hereby affirm that I am a contractor as defined in Section 70001 of Division 3 of the Business and Professions Code, and I am required to carry workers' compensation insurance for my employees.

I am insured by:

Company:

Address:

Date: 3-28-93

INSPECTOR COPY

PERMIT VALIDATION

001077

3-29-93

CASH M.D.

CASH

PLANS TO APPLICANT				INSPECTOR'S NOTES	
To	Date	Returned		Date Received or Approved	
		No.	Date		
Approved		Required			
		Yes	No		
Water Certificate					
Health Department					
Fire Department					
Grading					
Geological					
Pedestrian Protection (Fence) (Curbs)					
Special Inspection (Conc.) (Masonry) (Welding)					
Lot Drainage					
Parking					
Approvals	Date	Inspector's Signature			
Location (Setback & Yards)					
Foundations					
Slab					
Frame					
Energy Insulation					
Lath/Drywall — Interior					
Lath — Exterior					
House Number — Correct & Posted					
Final — Enter on Form					



M



# Important Information about Your Geoenvironmental Report

Geoenvironmental studies are commissioned to gain information about environmental conditions on and beneath the surface of a site. The more comprehensive the study, the more reliable the assessment is likely to be. But remember: Any such assessment is to a greater or lesser extent based on professional opinions about conditions that cannot be seen or tested. Accordingly, no matter how many data are developed, risks created by unanticipated conditions will always remain. *Have realistic expectations.* Work with your geoenvironmental consultant to manage known and unknown risks. Part of that process should already have been accomplished, through the risk allocation provisions you and your geoenvironmental professional discussed and included in your contract's general terms and conditions. This document is intended to explain some of the concepts that may be included in your agreement, and to pass along information and suggestions to help you manage your risk.

## **Beware of Change; Keep Your Geoenvironmental Professional Advised**

The design of a geoenvironmental study considers a variety of factors that are subject to change. Changes can undermine the applicability of a report's findings, conclusions, and recommendations. *Advise your geoenvironmental professional about any changes you become aware of.* Geoenvironmental professionals cannot accept responsibility or liability for problems that occur because a report fails to consider conditions that did not exist when the study was designed. Ask your geoenvironmental professional about the types of changes you should be particularly alert to. Some of the most common include:

- modification of the proposed development or ownership group,
- sale or other property transfer,
- replacement of or additions to the financing entity,
- amendment of existing regulations or introduction of new ones, or
- changes in the use or condition of adjacent property.

Should you become aware of any change, *do not rely on a geoenvironmental report.* Advise your geoenvironmental professional immediately; follow the professional's advice.

## **Recognize the Impact of Time**

A geoenvironmental professional's findings, recommendations, and conclusions cannot remain valid indefinitely. The more time that passes, the more likely it is that important latent changes will occur. *Do not rely on a geoenvironmental report if too much time has elapsed since it was completed.* Ask your environmental professional to define "too much time." In the case of Phase I Environmental Site Assessments (ESAs), for example, more than 180 days after submission is generally considered "too much."

## **Prepare To Deal with Unanticipated Conditions**

The findings, recommendations, and conclusions of a Phase I ESA report typically are based on a review of historical information, interviews, a site "walkover," and other forms of noninvasive research. When site subsurface conditions are not sampled in any way, the risk of unanticipated conditions is higher than it would otherwise be.

While borings, installation of monitoring wells, and similar invasive test methods can help reduce the risk of unanticipated conditions, *do not overvalue the effectiveness of testing.* Testing provides information about actual conditions only at the precise locations where samples are taken, and only when they are taken. Your geoenvironmental professional has applied that specific information to develop a general opinion about environmental conditions. *Actual conditions in areas not sampled may differ (sometimes sharply) from those predicted in a report.* For example, a site may contain an unregistered underground storage tank that shows no surface trace of its existence. *Even conditions in areas that were tested can change,* sometimes suddenly, due to any number of events, not the least of which include occurrences at



adjacent sites. Recognize, too, that *even some conditions in tested areas may go undiscovered*, because the tests or analytical methods used were designed to detect only those conditions assumed to exist.

Manage your risks by retaining your geoenvironmental professional to work with you as the project proceeds. Establish a contingency fund or other means to enable your geoenvironmental professional to respond rapidly, in order to limit the impact of unforeseen conditions. And to help prevent any misunderstanding, identify those empowered to authorize changes and the administrative procedures that should be followed.

### **Do Not Permit Any Other Party To Rely on the Report**

Geoenvironmental professionals design their studies and prepare their reports to meet the specific needs of the clients who retain them, in light of the risk management methods that the client and geoenvironmental professional agree to, and the statutory, regulatory, or other requirements that apply. The study designed for a developer may differ sharply from one designed for a lender, insurer, public agency...or even another developer. *Unless the report specifically states otherwise, it was developed for you and only you.* Do not unilaterally permit any other party to rely on it. The report and the study underlying it may not be adequate for another party's needs, and you could be held liable for shortcomings your geoenvironmental professional was powerless to prevent or anticipate. Inform your geoenvironmental professional when you know or expect that someone else—a third-party—will want to use or rely on the report. *Do not permit third-party use or reliance until you first confer with the geoenvironmental professional who prepared the report.* Additional testing, analysis, or study may be required and, in any event, appropriate terms and conditions should be agreed to so both you and your geoenvironmental professional are protected from third-party risks. *Any party who relies on a geoenvironmental report without the express written permission of the professional who prepared it and the client for whom it was prepared may be solely liable for any problems that arise.*

### **Avoid Misinterpretation of the Report**

Design professionals and other parties may want to rely on the report in developing plans and specifications. They need to be advised, in writing, that their needs may not have been considered when the study's scope was developed, and, even if their needs were considered, they might misinterpret geoenvironmental findings, conclusions, and recommendations. *Commission your geoenvironmental professional to explain pertinent elements of the report to others who are permitted to rely on it, and to review any plans, specifications or other instruments of professional service that incorporate any of the report's findings, conclusions, or recommendations.* Your geoenvironmental professional has the best understanding of the issues involved, including the fundamental assumptions that underpinned the study's scope.

### **Give Contractors Access to the Report**

Reduce the risk of delays, claims, and disputes by giving contractors access to the full report, *providing that it is accompanied by a letter of transmittal that can protect you* by making it unquestionably clear that: 1) the study was not conducted and the report was not prepared for purposes of bid development, and 2) the findings, conclusions, and recommendations included in the report are based on a variety of opinions, inferences, and assumptions and are subject to interpretation. Use the letter to also advise contractors to consult with your geoenvironmental professional to obtain clarifications, interpretations, and guidance (a fee may be required for this service), and that—in any event—they should conduct additional studies to obtain the specific type and extent of information each prefers for preparing a bid or cost estimate. Providing access to the full report, with the appropriate caveats, helps prevent formation of adversarial attitudes and claims of concealed or differing conditions. If a contractor elects to ignore the warnings and advice in the letter of transmittal, it would do so at its own risk. Your geoenvironmental professional should be able to help you prepare an effective letter.

### **Do Not Separate Documentation from the Report**

Geoenvironmental reports often include supplemental documentation, such as maps and copies of regulatory files, permits, registrations, citations, and correspondence with regulatory agencies. If subsurface explorations were performed, the report may contain final boring logs and copies of laboratory data. If remediation activities occurred on site, the report may include: copies of daily field reports; waste manifests; and information about the disturbance of subsurface materials, the type and thickness of any fill placed on site, and fill placement practices, among other types of documentation. *Do not separate supplemental documentation from the report. Do not, and do not permit any other party to redraw or modify any of the supplemental documentation for incorporation into other professionals' instruments of service.*

### **Understand the Role of Standards**

Unless they are incorporated into statutes or regulations, standard practices and standard guides developed by the American Society for Testing and Materials (ASTM) and other recognized standards-developing organizations (SDOs) are little more than aspirational methods agreed to by a consensus of a committee. The committees that develop standards may not comprise those best-qualified to establish methods and, no matter what, no standard method can possibly consider the infinite client- and project-specific variables that fly in the face of the theoretical "standard conditions" to which standard practices and standard guides apply. In fact, these variables can be so pronounced that geoenvironmental professionals who comply with every directive of an ASTM or other standard procedure could run afoul of local custom and practice, thus violating the standard of care.



Accordingly, when geoenvironmental professionals indicate in their reports that they have performed a service "in general compliance" with one standard or another, it means they have applied professional judgement in creating and implementing a scope of service designed for the specific client and project involved, and which follows some of the general precepts laid out in the referenced standard. To the extent that a report indicates "general compliance" with a standard, you may wish to speak with your geoenvironmental professional to learn more about what was and was not done. *Do not assume a given standard was followed to the letter.* Research indicates that that seldom is the case.

### **Realize That Recommendations May Not Be Final**

The technical recommendations included in a geoenvironmental report are based on assumptions about actual conditions, and so are preliminary or tentative. Final recommendations can be prepared only by observing actual conditions as they are exposed. For that reason, you should retain the geoenvironmental professional of record to observe construction and/or remediation activities on site, to permit rapid response to unanticipated conditions. *The geoenvironmental professional who prepared the report cannot assume responsibility or liability for the report's recommendations if that professional is not retained to observe relevant site operations.*

### **Understand That Geotechnical Issues Have Not Been Addressed**

Unless geotechnical engineering was specifically included in the scope of professional service, a report is not likely to relate any findings, conclusions, or recommendations about the suitability of subsurface materials for construction purposes, especially when site remediation has been accomplished through the removal, replacement, encapsulation, or chemical treatment of on-site soils. The

equipment, techniques, and testing used by geotechnical engineers differ markedly from those used by geoenvironmental professionals; their education, training, and experience are also significantly different. If you plan to build on the subject site, but have not yet had a geotechnical engineering study conducted, your geoenvironmental professional should be able to provide guidance about the next steps you should take. The same firm may provide the services you need.

### **Read Responsibility Provisions Closely**

Geoenvironmental studies cannot be exact; they are based on professional judgement and opinion. Nonetheless, some clients, contractors, and others assume geoenvironmental reports are or certainly should be unerringly precise. Such assumptions have created unrealistic expectations that have led to wholly unwarranted claims and disputes. To help prevent such problems, geoenvironmental professionals have developed a number of report provisions and contract terms that explain who is responsible for what, and how risks are to be allocated. Some people mistake these for "exculpatory clauses," that is, provisions whose purpose is to transfer one party's rightful responsibilities and liabilities to someone else. Read the responsibility provisions included in a report and in the contract you and your geoenvironmental professional agreed to. *Responsibility provisions are not "boiler-plate."* They are important.

### **Rely on Your Geoenvironmental Professional for Additional Assistance**

Membership in ASFE exposes geoenvironmental professionals to a wide array of risk management techniques that can be of genuine benefit for everyone involved with a geoenvironmental project. Confer with your ASFE-member geoenvironmental professional for more information.



8811 Colesville Road/Suite G106, Silver Spring, MD 20910

Telephone: 301/565-2733 Facsimile: 301/589-2017

e-mail: [info@asfe.org](mailto:info@asfe.org) [www.asfe.org](http://www.asfe.org)

Copyright 2004 by ASFE, Inc. Duplication, reproduction, or copying of this document, in whole or in part, by any means whatsoever, is strictly prohibited, except with ASFE's specific written permission. Excerpting, quoting, or otherwise extracting wording from this document is permitted only with the express written permission of ASFE, and only for purposes of scholarly research or book review. Only members of ASFE may use this document as a complement to or as an element of a geoenvironmental report. Any other firm, individual, or entity that so uses this document without being an ASFE member could be committing negligent or intentional (fraudulent) misrepresentation.