



Homeless Resource Information & Networking Night

June 28, 2023

Tonight

Mayor Doug Cirbo - Introductions

Robert Pequeno - Homelessness 101

Christina Ramirez - County Approach/CARE Court

Captain C. Berryman - Homelessness in Lake Forest

Public Interaction with Service Providers



Welcome & Introductions

Mayor Doug Cirbo



**Lake Forest City
Councilman
Robert Pequeno
OCSD, ret.**

This disclaimer informs attendees that the views, thoughts, and opinions expressed in this presentation belong solely to me, my experience, and not the City of Lake Forest, Lake Forest City Council, Orange County Sheriff's Department, or any other organization here today.

Homelessness is not a crime!

Sleeping in car is not a crime.
(Public or private property)

Stages of Homelessness

- ▶ **Transitional** - A person that is going through a major life change or catastrophic event.
- ▶ **Episodic** - A person that has experienced episodes of homelessness.
- ▶ **Chronic** - has experienced homelessness for at least a year - or repeatedly.
- ▶ **Hidden** - Many people who are homeless do not show up in official figures. (Largest group)

Causes of Homelessness

- ▶ Alcohol and drug abuse?
- ▶ Mental illness?

At Risk of Homelessness or Housing Insecure

- ▶ Has income below the median income.
- ▶ Has insufficient resources immediately available to attain housing stability.
- ▶ For every homeless person that is connected with resources, 5 more fall into homelessness.*

*National Alliance to end homelessness

Breaking Apart Homelessness

Misconceptions: The Real Facts About Homelessness in America

- ▶ Situation result of own choices.
- ▶ They don't want to work.
- ▶ They are dangerous or violent.

Two Faces of Homelessness





The average age of a homeless person is 11 years old.*

*Jan 2022 Invisiblepeople

Case Law



**HOW DID WE
GET HERE?:
MARTIN V. BOISE**

Martin v. Boise

- ▶ In 2009 local homeless shelter in Boise closed
- ▶ 6 individuals cited for violations of a city ordinance that makes it illegal to sleep on public property.
- ▶ Robert Martin filed a lawsuit.
- ▶ The ruling leaves undecided the issue of whether it is legal to set limits on which public properties and during what hours camping or sleeping can be prohibited;
- ▶ The city of Sacramento, for example, allows sleeping on the City Hall grounds at night but not during the day, and this arrangement is not explicitly banned by the ruling.
 - ▶ Time
 - ▶ Place
 - ▶ Manner

Martin v. Boise

- ▶ But there are exceptions to the rule:
- ▶ “[We [do not] suggest that a jurisdiction with insufficient shelter can never criminalize the act of sleeping outside. **Even where shelter is unavailable, an ordinance prohibiting sitting, lying, or sleeping outside at particular times or in particular locations might well be constitutionally permissible.** [Citation.] So, too, might an ordinance barring the obstruction of public rights of way or the erection of certain structures. Whether some other ordinance is consistent with the Eighth Amendment will depend, as here, on whether it punishes a person for lacking the means to live out the ‘universal and unavoidable consequence of being human’ in the way the [Boise] ordinance prescribes. [Citation.]”



**Christina Weckerly
Ramirez
County of Orange
Health Care Agency**



OC HEALTH CARE AGENCY

Mental Health and Recovery Services (MHRS)

Christina Weckerly Ramirez, OC O&E Division Manager
Jennifer Dinicola, LCSW, OC O&E Manager

VISION

Quality health for all.



MISSION

In partnership with the community, deliver sustainable and responsive services that promote population health and equity.

GOALS

Promote quality, equity, and value.
Ensure the HCA's sustainability.
Offer relevant services to the community.



Community Assistance, Recovery and Empowerment (CARE) Act

What is the CARE Act?

Care is a compassionate civil court process that provides participants with a clinically appropriate, community-based set of services and supports that are culturally and linguistically competent

-
- New pathway to deliver behavioral health services to most severely ill that preserves self determination to the greatest extent possible by supporting a less restrictive, community-based care setting
-
- CARE is upstream diversion with access to critical behavioral health services, housing, and support
-
- CARE is based on supporting a path to recovery and self-sufficiency

Orange County is part of Cohort 1 for California for implementation in Oct 2023

Participant Criteria:

- 18 years or older
- Has Schizophrenia Spectrum Disorder or other Psychotic Disorder
- Is not in ongoing treatment
- Meets one of the following:
 - Unlikely to survive and deteriorating
 - Would likely become Gravely Disabled as outlined in WIC 5150

Pathway through CARE



Role of Housing

Stability is important for recovery

CARE Plans include a housing plan

Behavioral Health Bridge Housing-

MHRS applied for funding that prioritizes CARE participants



(800) 364-2221



The **OC Outreach and Engagement** team assists individuals who are experiencing homelessness. Call if you are looking for resources or to connect in the field.

OC O&E's Aim



Goal: To improve the health and well-being of the population by

- Connecting with individuals experiencing homelessness where they are at
- Providing cross-sector coordination and services across the continuum of care
- Serving individuals, communities/neighborhoods, and the county

Who we serve & how

OC O&E serves:

- Anyone currently residing in Orange County who is experiencing unsheltered homelessness

Principles:

- Building trust through human connections
- Developing a sense of community
- Treating others with honesty, dignity, respect, compassion, and equity
- Progressive engagement

Strategies:

- Person-centered
- No wrong door approach
- Trauma-informed
- Harm reduction
- Motivational interviewing
- Housing First
- Warm-hand off
- Recovery model





What we do

Utilizing multidisciplinary and collaborative teams, we serve as:

- Agency ambassadors, navigators, and case managers
- Coordinators for other field-based services and multi-agency responses
- Collaborators through community and multi-disciplinary meetings

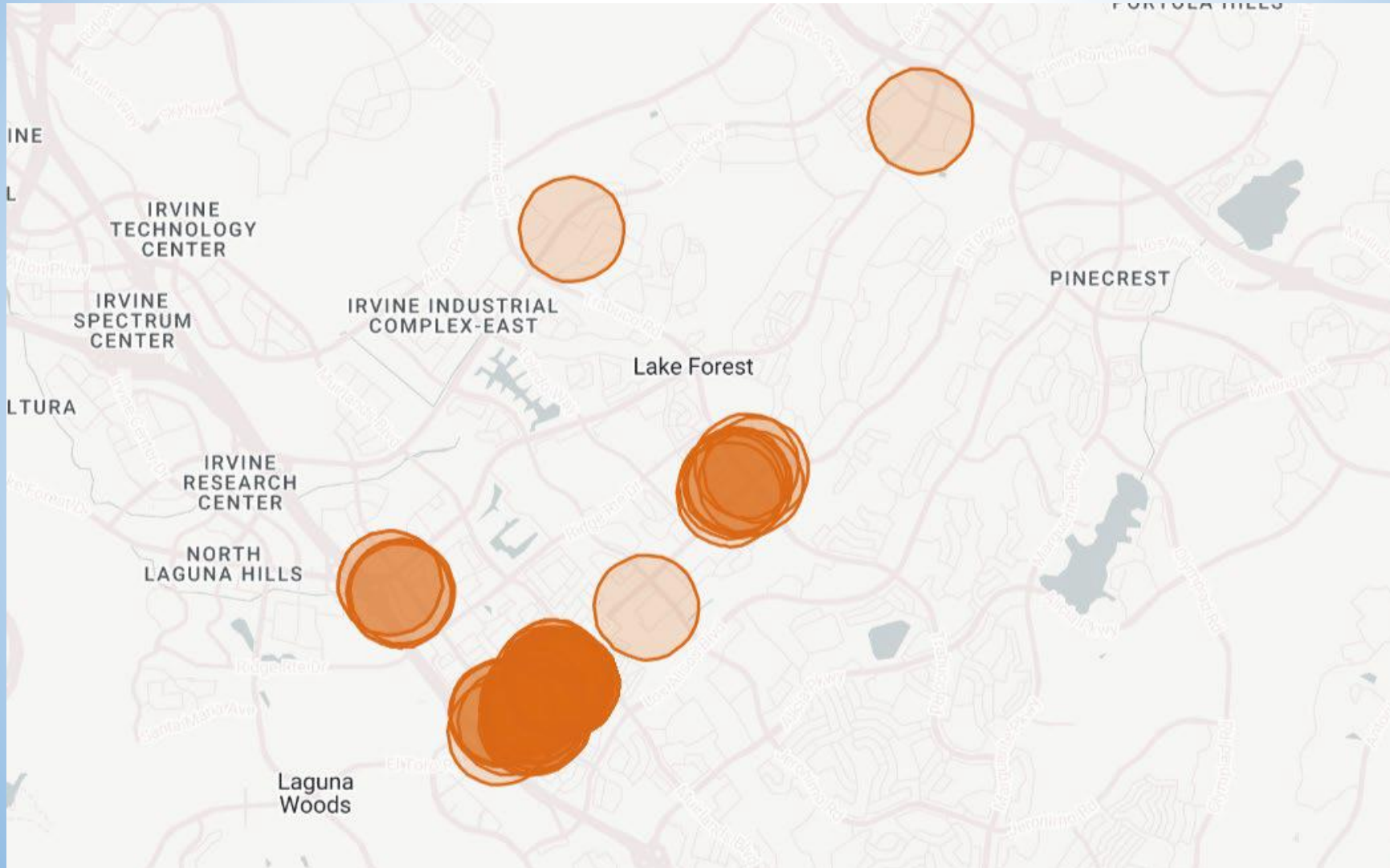
Current language capabilities: Spanish, Vietnamese, Farsi

What to expect from OC O&E



- Staff point of contact for referrals and follow-up
- Referrals to shelters- Shelter bed reservation system
- Access point for Coordinated Entry System
- Transportation to appointments or bus pass/ride
- Treat whole person with physical health linkage
- Multidisciplinary approach
- Behavioral health assessment and linkage
- Housing First Approach
- Warm link to Regional Care Coordination

OC O&E: Lake Forest encounters Dec 22- June 23





Referrals

- Received 24/7 through the program's triage line at (800) 364-2221
- Assigned to regional teams (spokes) in the Central, North, and South Service Planning Areas for response during business hours
- OC O&E operates
 - Monday through Friday 7 a.m. to 7 p.m.
 - Saturday and Sunday 8 a.m. to 5:30 p.m.



BEHAVIORAL HEALTH SERVICES LINE

24 hours a day / 7 days a week / 365 days a year

OC Links^{24/7}

Who we are

OC Links utilizes trained Navigators, who are Behavioral Health Clinicians, to provide

- Information
- Referral
- Linkage directly to programs
- Dispatch of field evaluation teams
- Resources
- De-escalation
- Education





OC Links^{24/7} Who We SERVE

Callers can be

- Potential participants
- Family Members and Friends
- Law Enforcement and other First Responders
- Providers
- Anyone seeking Behavioral Health resources and support

Connecting With OC LINKS^{24/7}

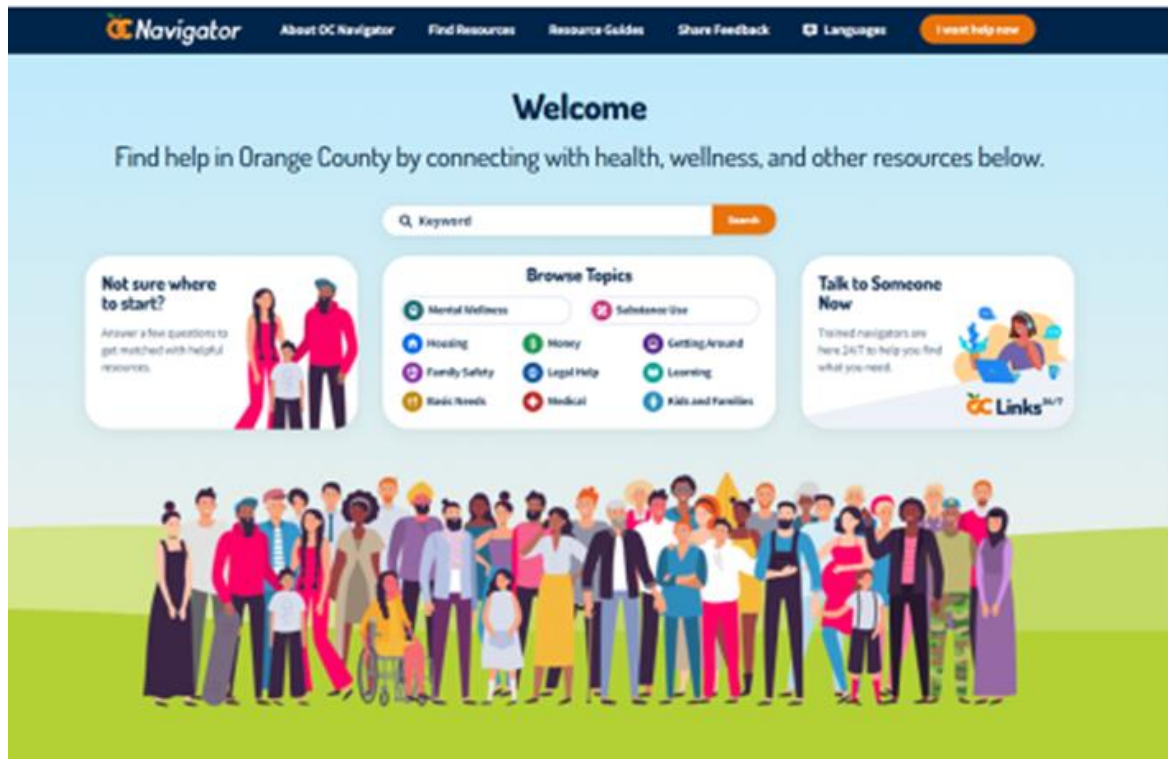


Available 24/7

Call (855) OC-LINKS to be connected to a Behavioral Health Navigator

Click on the OC Links Chat icon on HCA website or OC Navigator

TDD Number: 714-834-2332



An extensive and inclusive directory of Orange County resources available to support the health and wellness needs of all county residents

ocnavigator.org

Questions?

Christina Weckerly Ramirez
OC O&E Division Manager
cweckerly@ochca.com
714-834-8344

Jennifer Dinicola, LCSW
OC O&E Manager
jdinicola@ochca.com
714-834-8348



**OC Sheriff's Captain
Christine Berryman
Lake Forest Chief of
Police Services**

Homeless in Lake Forest

- ▶ 25 “Resident” homeless in Lake Forest, per OCSD count.
- ▶ 15 service resistant since 2012.
- ▶ The rest are transient.
- ▶ El Toro/Rockfield has a high amount of traffic.
- ▶ Encampments are few and far between

Private Property vs Public Property

- ▶ Trespassing Arrest Authorization Form (TAAF)
gives deputies authority to make arrests

Secondary Effects

- ▶ Homeless encampments
- ▶ Assault
- ▶ Retail theft
- ▶ Drug possession
- ▶ Personal property theft
- ▶ Trespassing

Who Are City's Partners?

- Orange County Sheriff's Department
- Families Forward
- Mercy House
- South County Outreach
- Saddleback Church

What's Next?

- ▶ Continue to partner with service providers
- ▶ Hire a Community Outreach Specialist

How Can You Help?

1. **Educate yourself and the Public** The more you learn about homelessness and how it is connected to the education, health care, foster care, and criminal justice systems, the better understanding you have to try and help manage this problem.
2. **Advocate** for increased local, state, and federal funding to create job opportunities for people disconnected from school or work.
3. **Reflect** on biases you or your institution might hold about people experiencing homelessness and employment. Challenge stigmas and misconceptions that you may hear in your networks and encourage people to do more research.
4. **Do not invalidate** the experiences of others or judge others based on their appearance, especially in the context of homelessness.
5. **Positive change, not spare change** – give to non-profits such as in this room rather than directly to individuals